

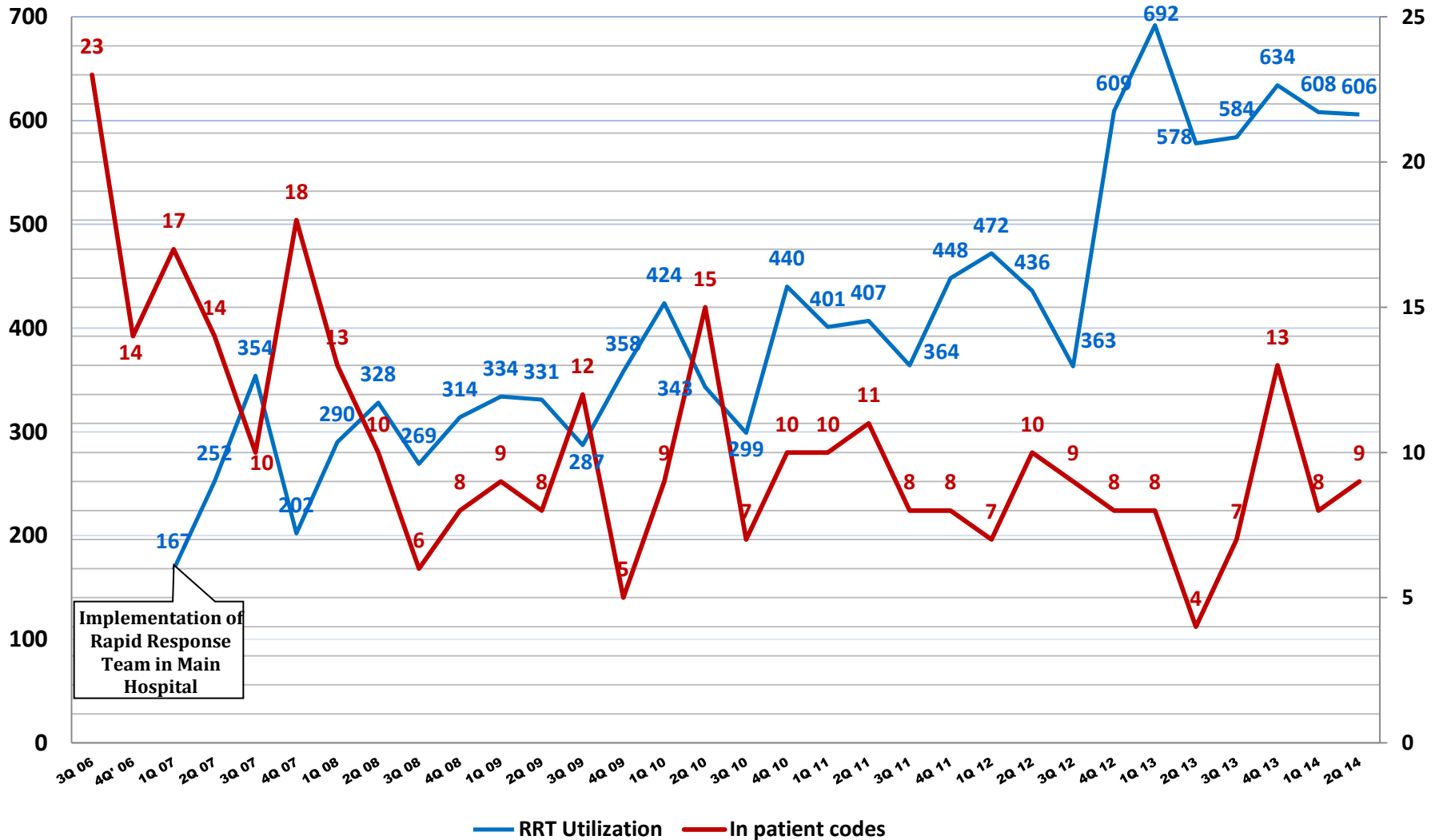


مستشفى الملك فيصل التخصصي ومركز الأبحاث
King Faisal Specialist Hospital & Research Centre
مؤسسة عامة. Gen. Org.

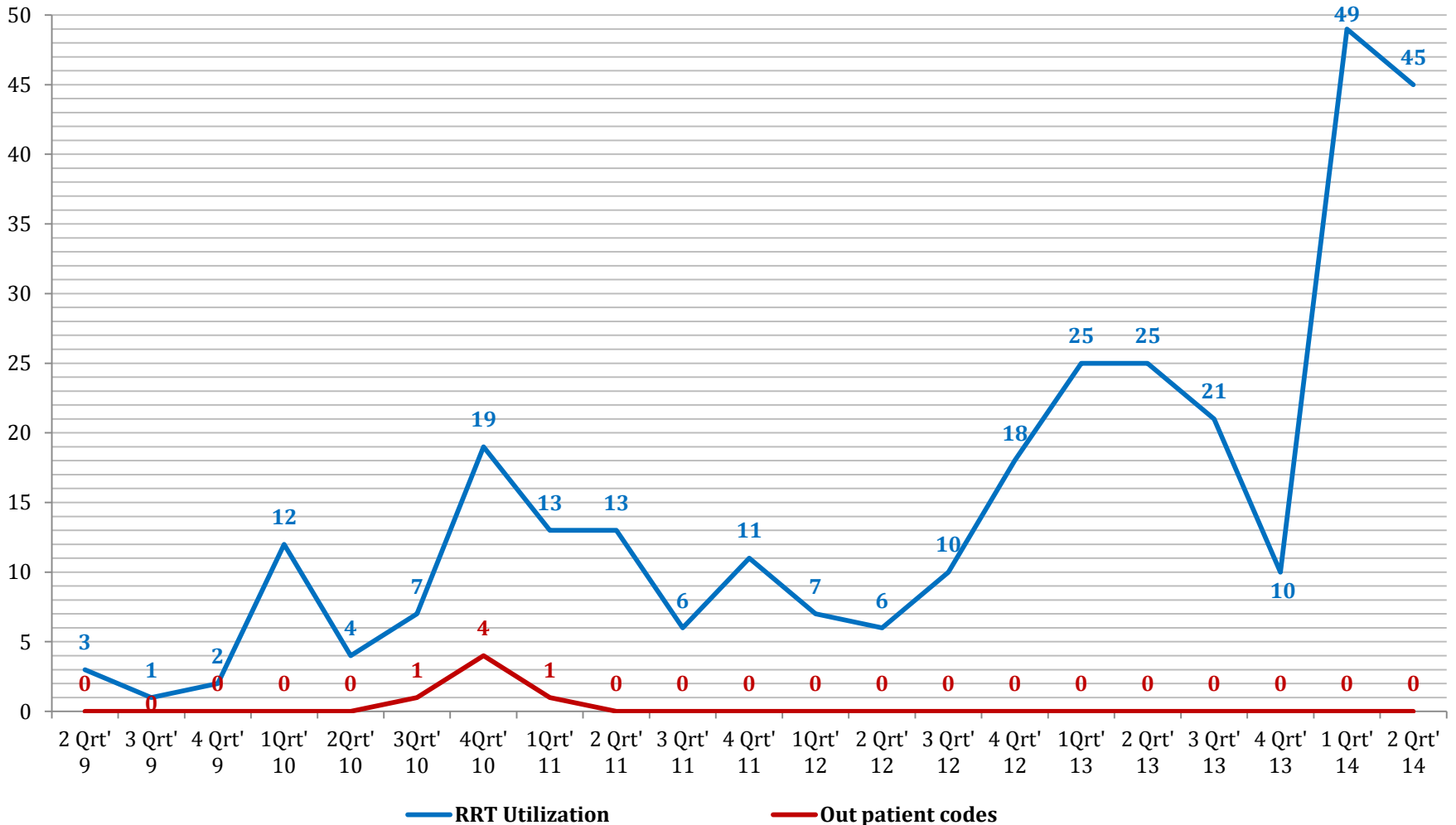
Rapid Response Team Report for 2nd Quarter 2014

Prepared by Rapid Response Team Coordinator 2014 ,
In collaboration with Performance Improvement Section Quality Management.

Rapid Response Team Utilization Versus In-Patient Codes by Quarters

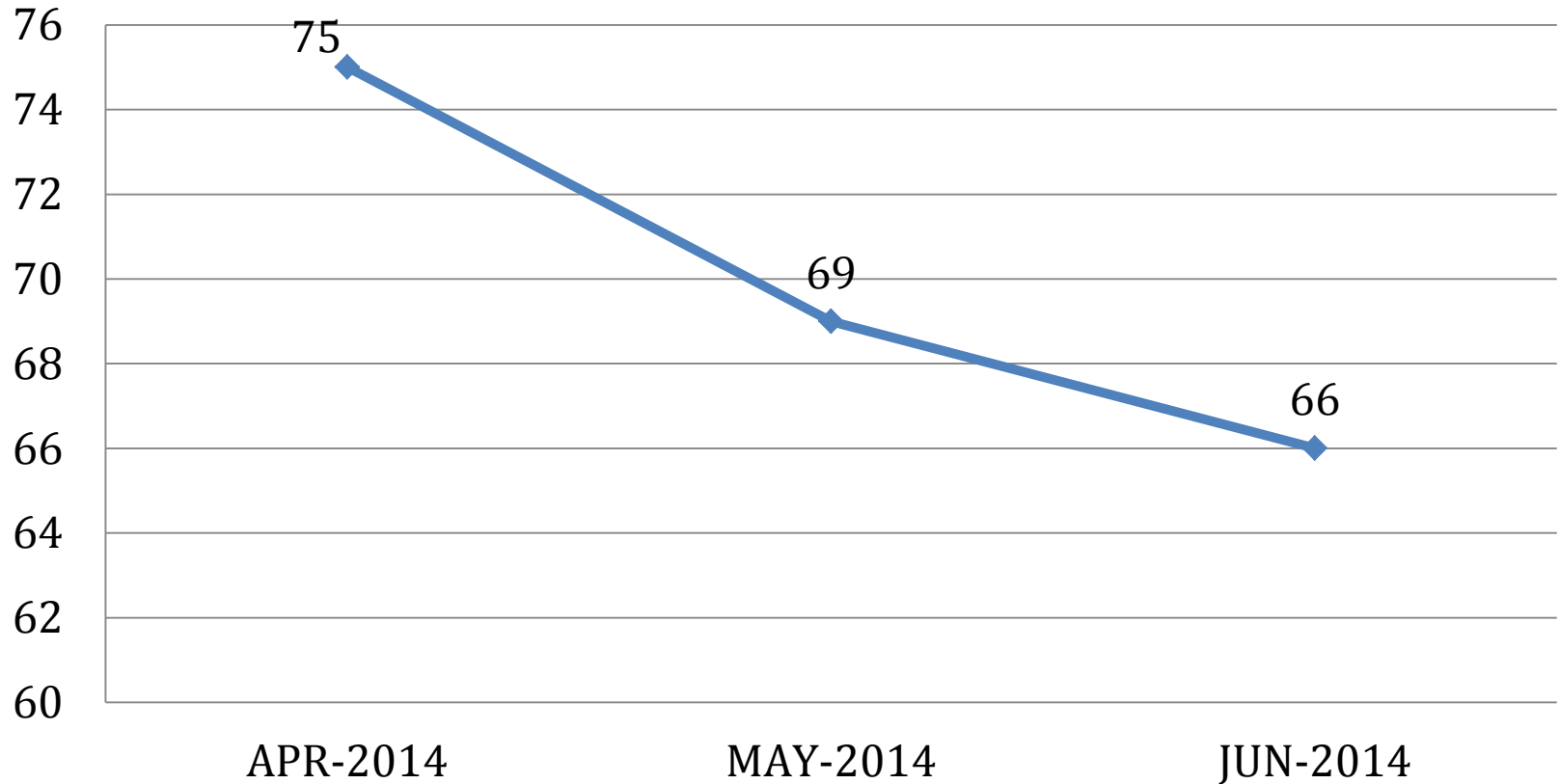


Rapid Response Team Utilization Versus Out-Patient Codes by Quarters

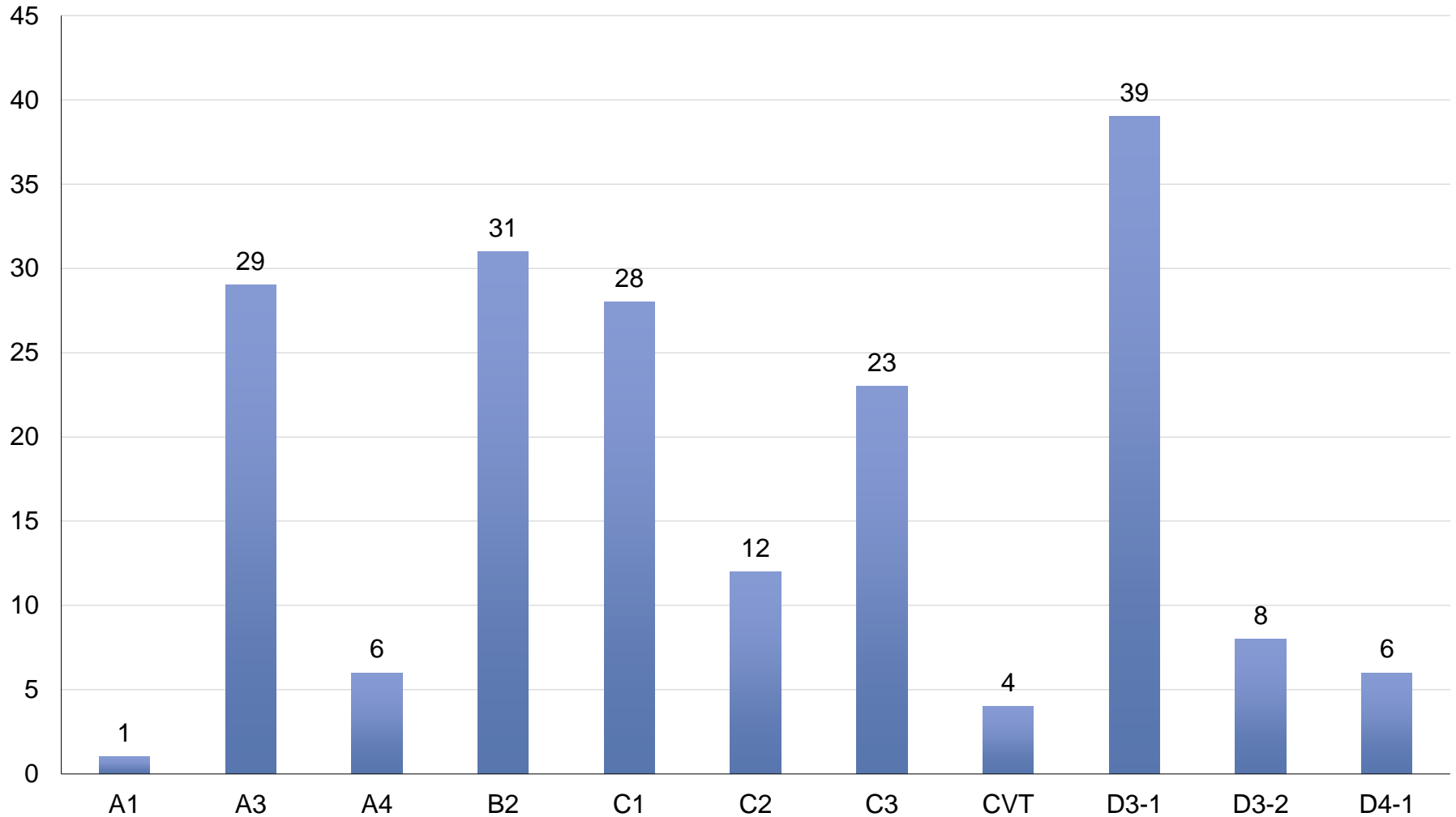


**Rapid Response Team
Report
for Adult In/Out Patients
in Main Building**

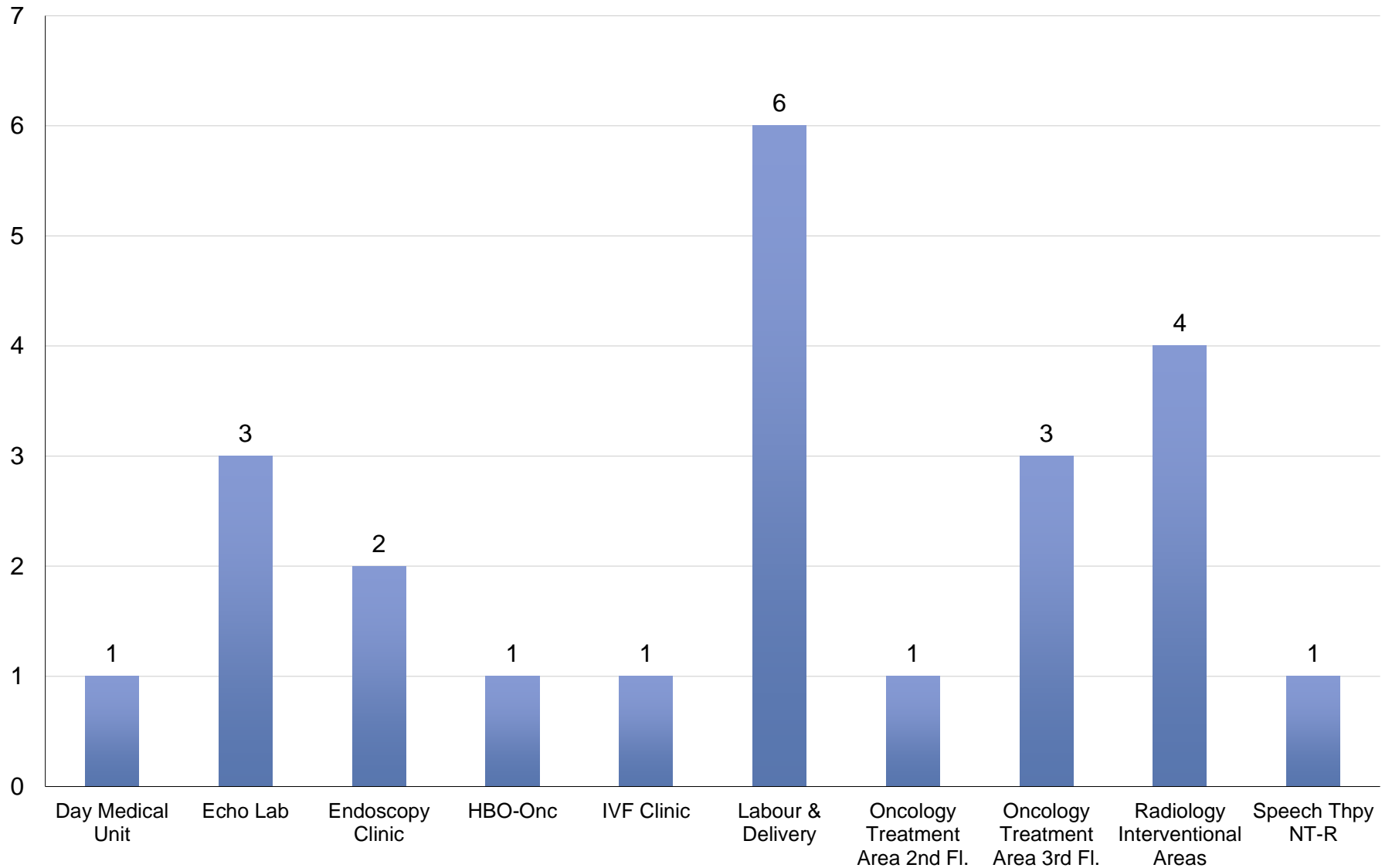
Rapid Response Team Utilization for Adult **In/Out** Patients in Main Building



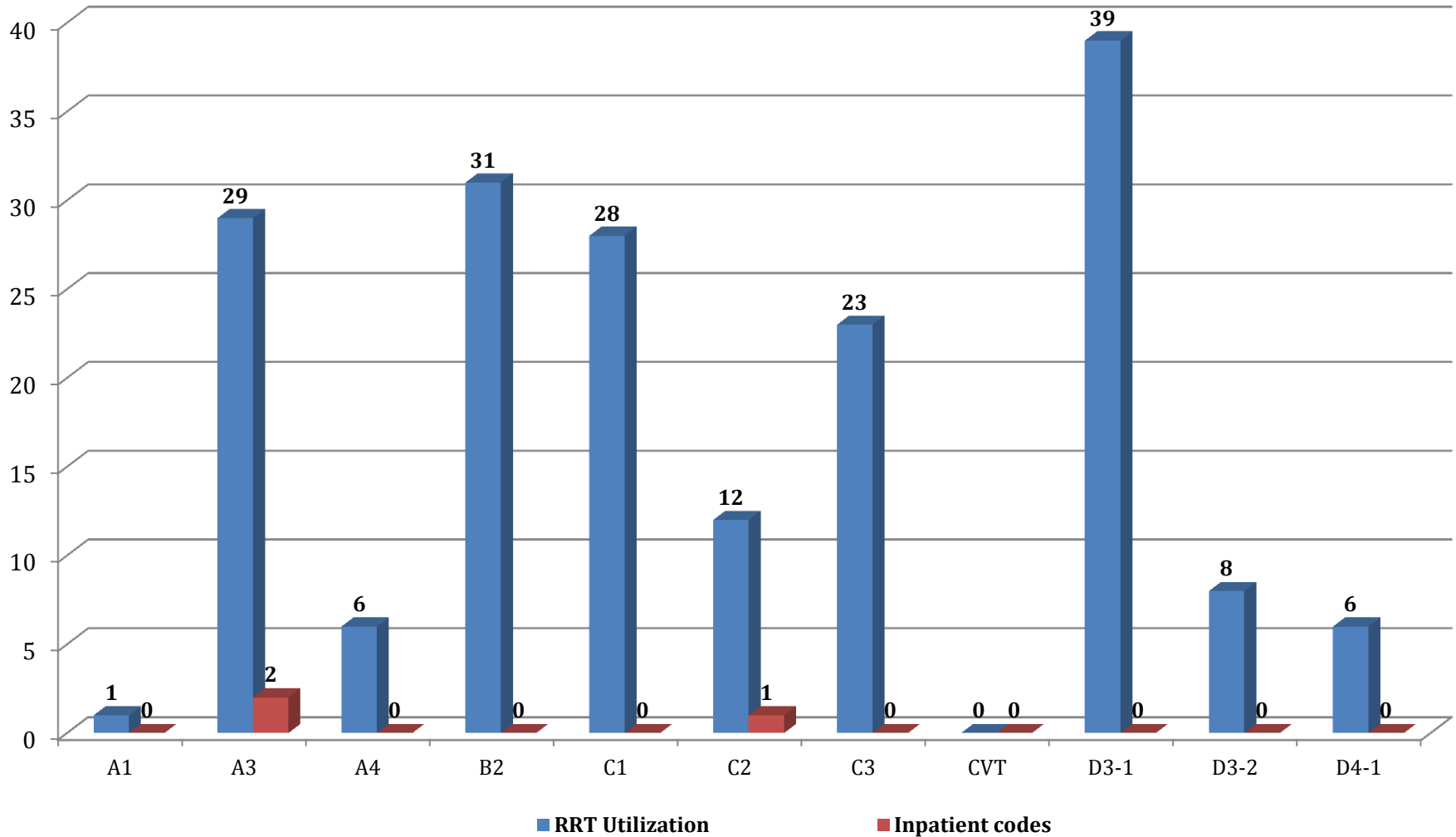
Rapid Response Team Utilization for Adult In-Patients in Main Building by Units



Rapid Response Team Utilization for Adult Out-Patients in Main Building by Units



Rapid Response Team Utilization Versus Adult In-Patient Codes by Units in Main Hospital 2nd Q 2014



Rapid Response Team Utilization for Adult Patients in Main Building

| | |
|--|-------------|
| Average Length of Stay in ICU | 5 Days |
| RRT utilization average | 139 Minutes |
| Average of First Response Arrival Time | 7 Minutes |

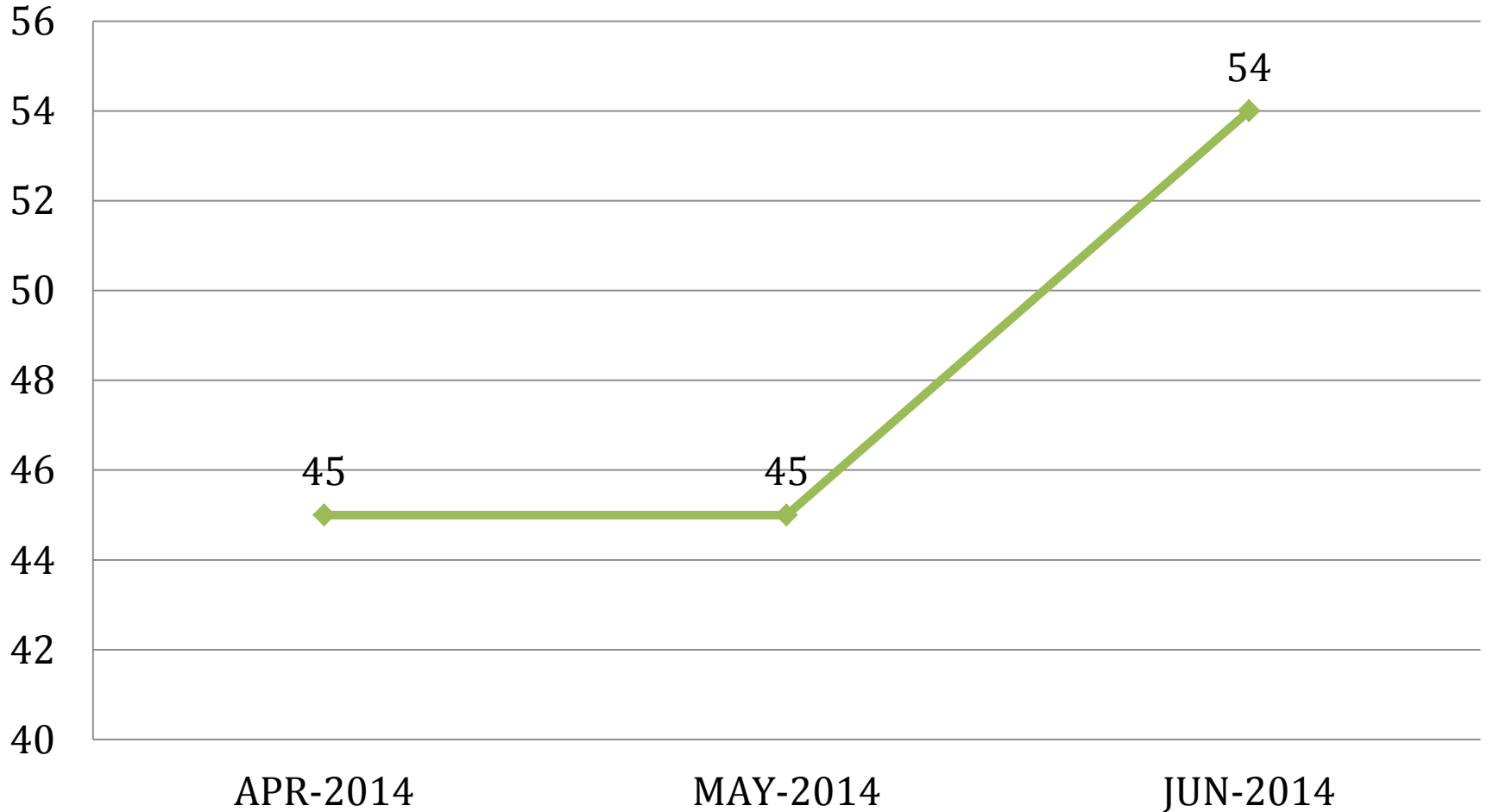
| In-patient Outcomes | Number | Percentage |
|--|--------|------------|
| Stayed in Room | 138 | 74% |
| Decision to Transfer Pt to ICU, Actual Transfer to ICU, | 47 | 25% |
| DNAR | 1 | 0.5% |
| DNAR, Deceased | 1 | 0.5% |

| Outpatient Outcomes | Number | Percentage |
|---|--------|------------|
| Stayed in Location | 14 | 61% |
| Transferred to DEM | 5 | 22% |
| Decision to Transfer Patient to ICU, Actual Transfer to ICU, | 4 | 17% |

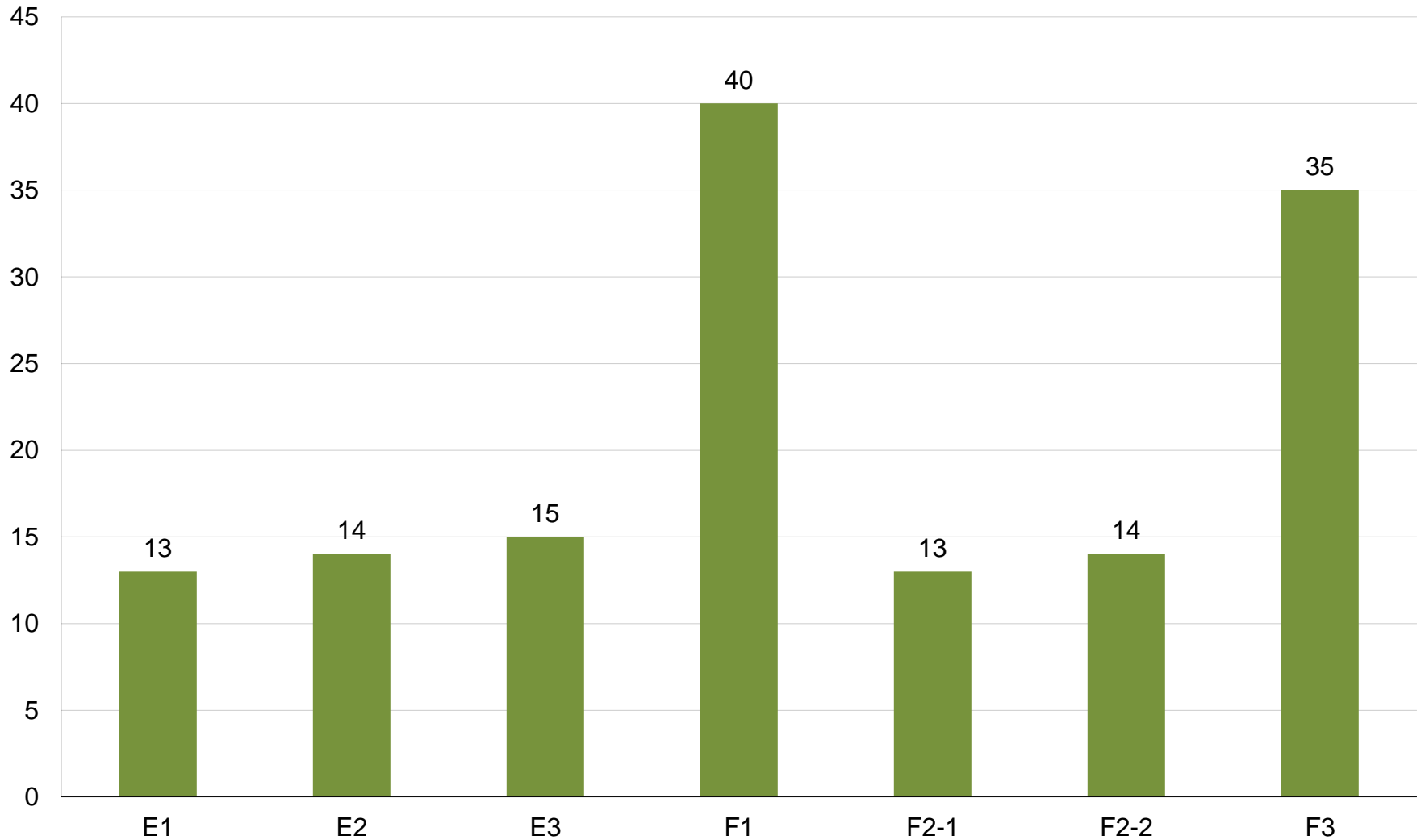
| Transferred Patients to ICU Outcomes | Number | Percentage |
|--------------------------------------|--------|------------|
| Transferred to Unit | 37 | 72% |
| Stayed in ICU | 8 | 16% |
| Deceased | 5 | 10% |
| Discharged Home | 1 | 2% |

**Rapid Response Team
Report
for Adult In/Out Patients
in East Wing**

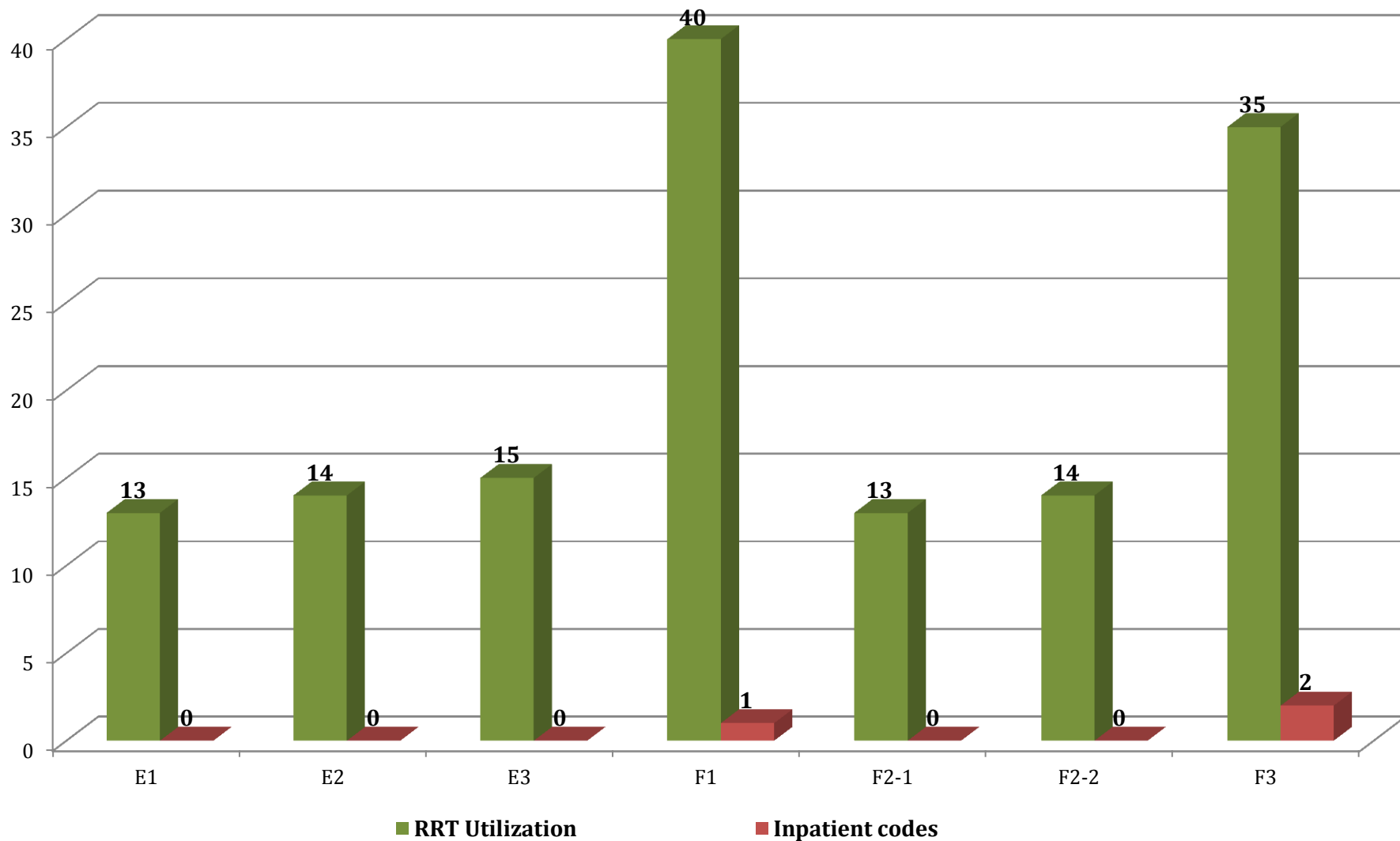
Rapid Response Team Utilization for Adult **In/Out** Patients in East Wing



Rapid Response Team Utilization for Adult In-Patients in East Wing by Units



Rapid Response Team Utilization Versus Adult In-Patient Codes by Units in East Wing 2nd Q 2014



Rapid Response Team Utilization for Adult Patients in East Wing

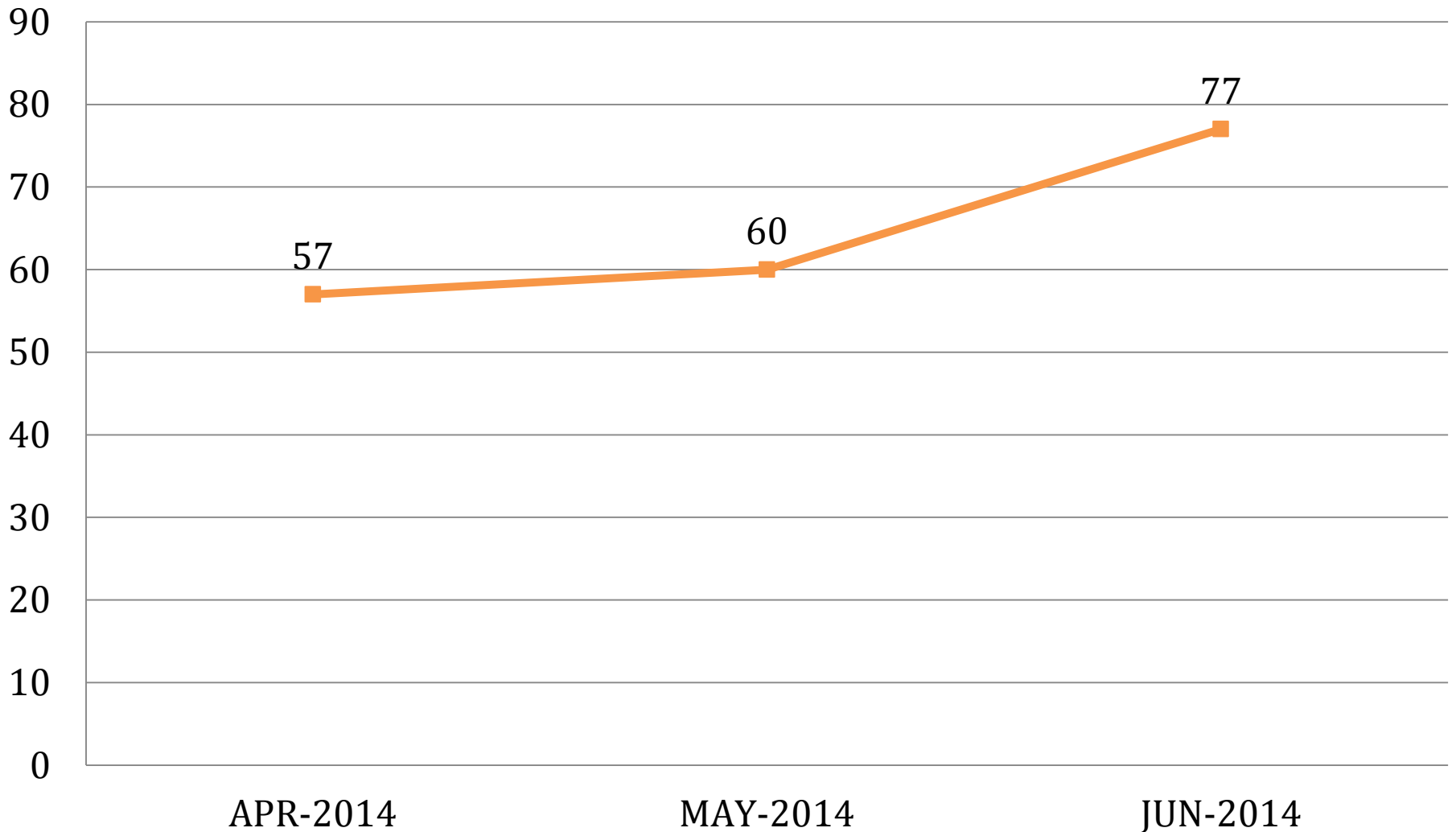
| | |
|--|-------------|
| Average Length of Stay in ICU | 7 Days |
| RRT utilization average | 294 Minutes |
| Average of First Response Arrival Time | 5 Minutes |

| Inpatient Outcome | Number | Percentage |
|--|--------|------------|
| Stayed in Room | 110 | 76% |
| Decision to Transfer Pt to ICU, Actual Transfer to ICU, | 33 | 23% |
| Stayed in Room, DNAR | 1 | 1% |

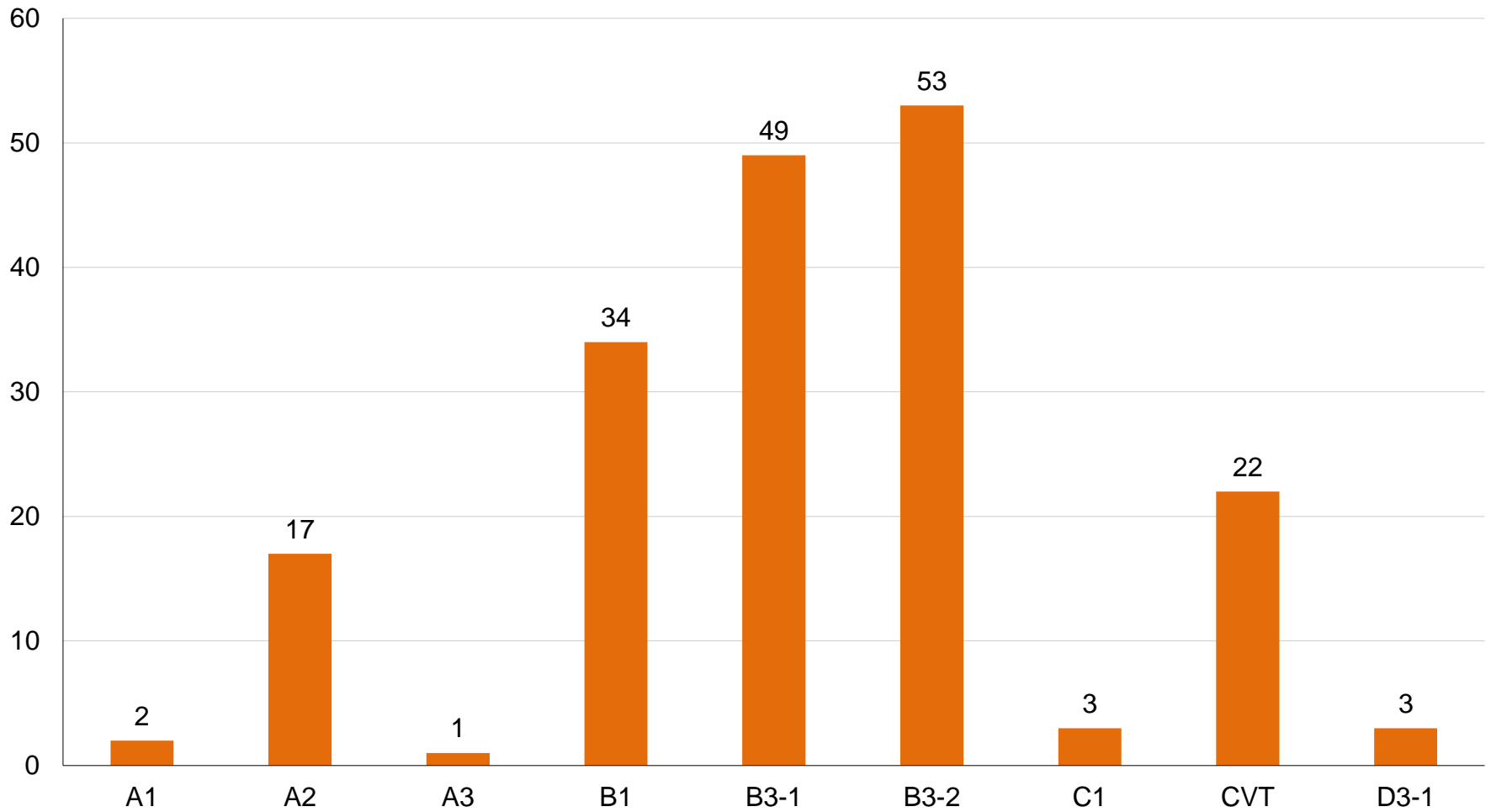
| Transferred Patients to ICU Outcomes | Number | Percentage |
|--------------------------------------|--------|------------|
| Transferred to Unit | 18 | 55% |
| Deceased | 8 | 24% |
| Stayed in ICU | 7 | 21% |

**Rapid Response Team
Report
for Pediatric
In/Out Patients
in Main Building**

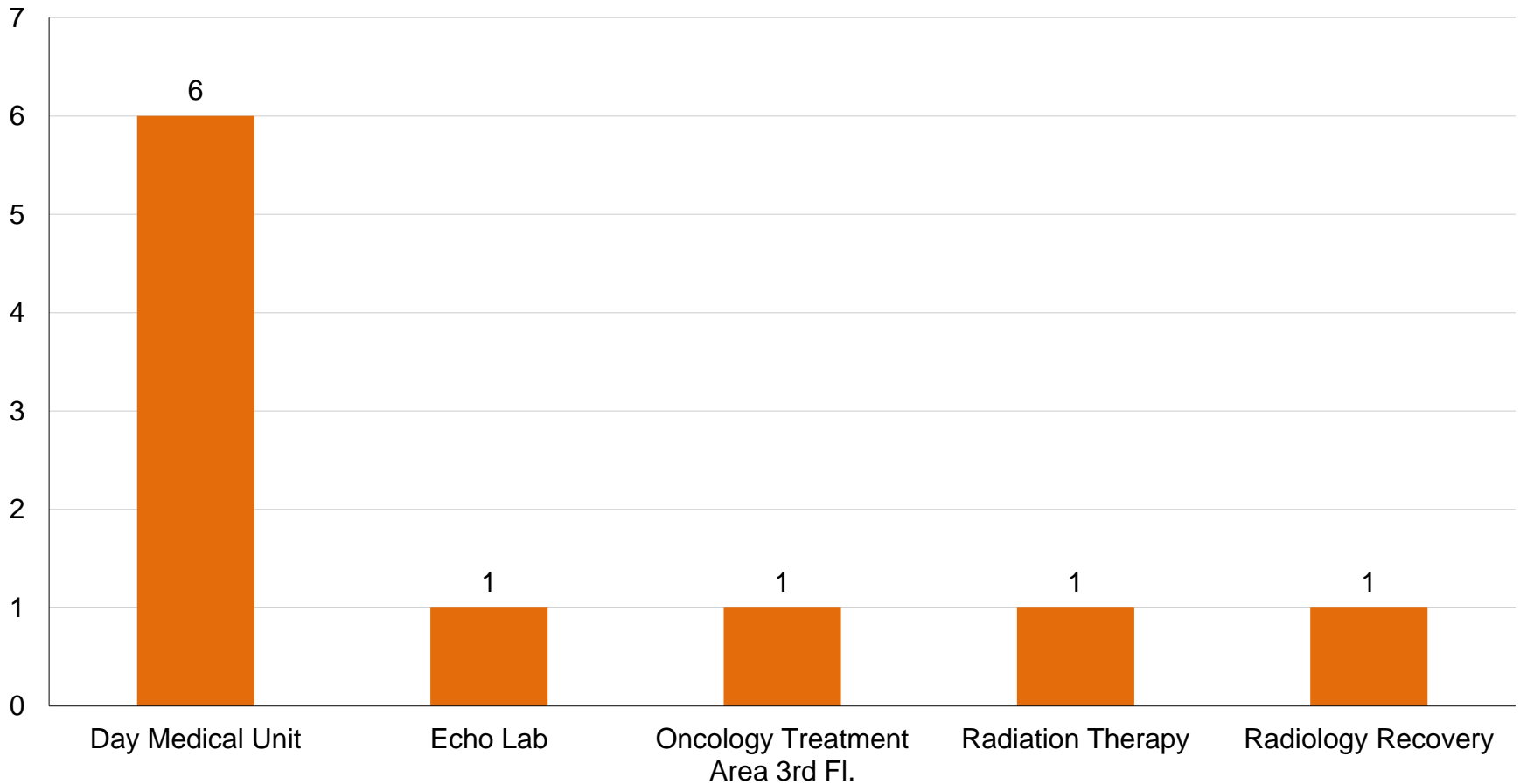
Rapid Response Team Utilization for Adult **In/Out** Patients in Main Building



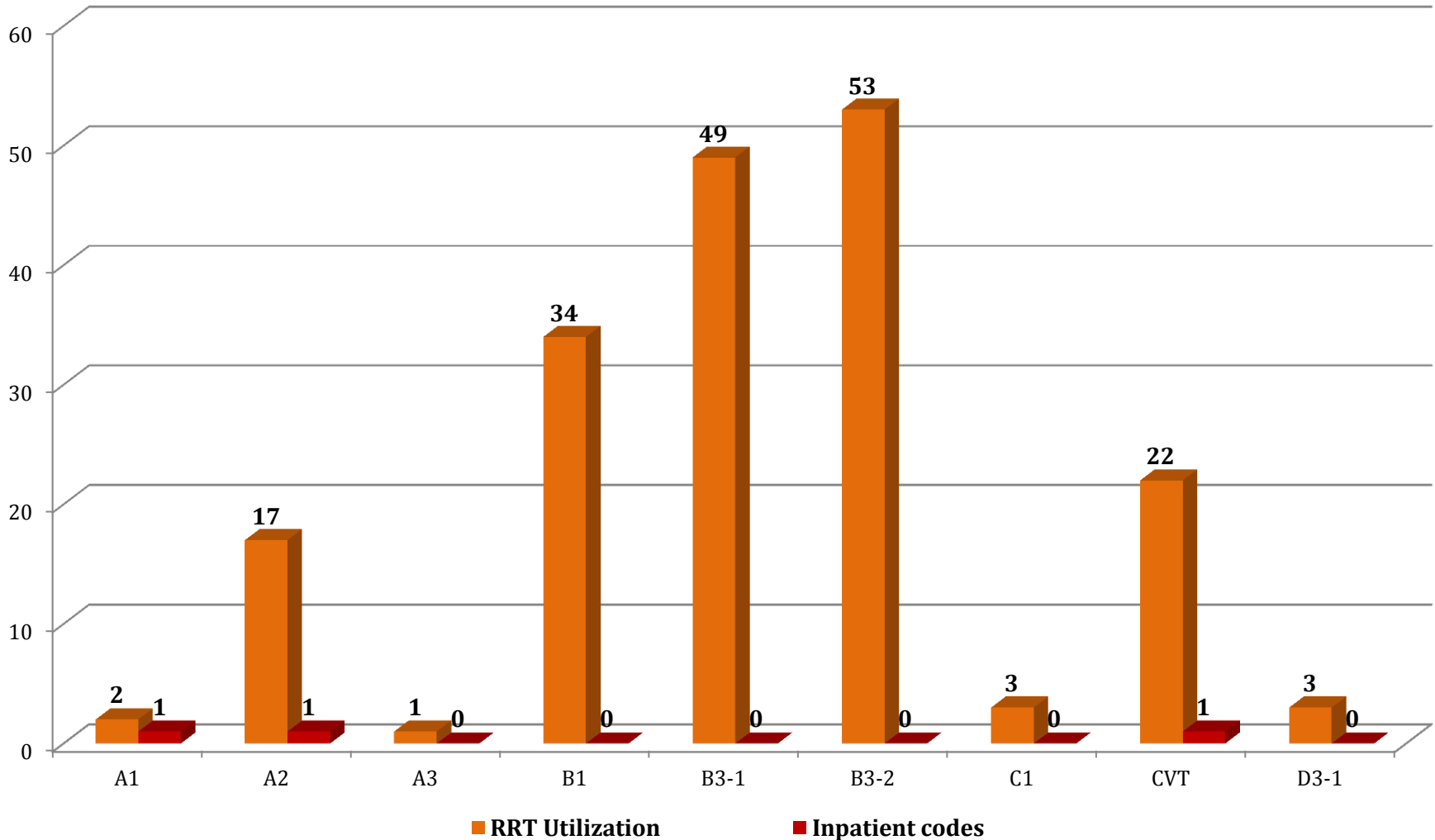
Rapid Response Team Utilization for Pediatric In-Patients in Main Building



Rapid Response Team Utilization for Pediatric Out-Patients in Main Building



Rapid Response Team Utilization Versus Pediatric In-Patient Codes by Units in Main Hospital 2nd Q 2014



Rapid Response Team Utilization for Pediatric Patients in Main Building

| | |
|--|------------|
| Average Length of Stay in ICU | 8 Days |
| RRT utilization average | 73 Minutes |
| Average of First Response Arrival Time | 7 Minutes |

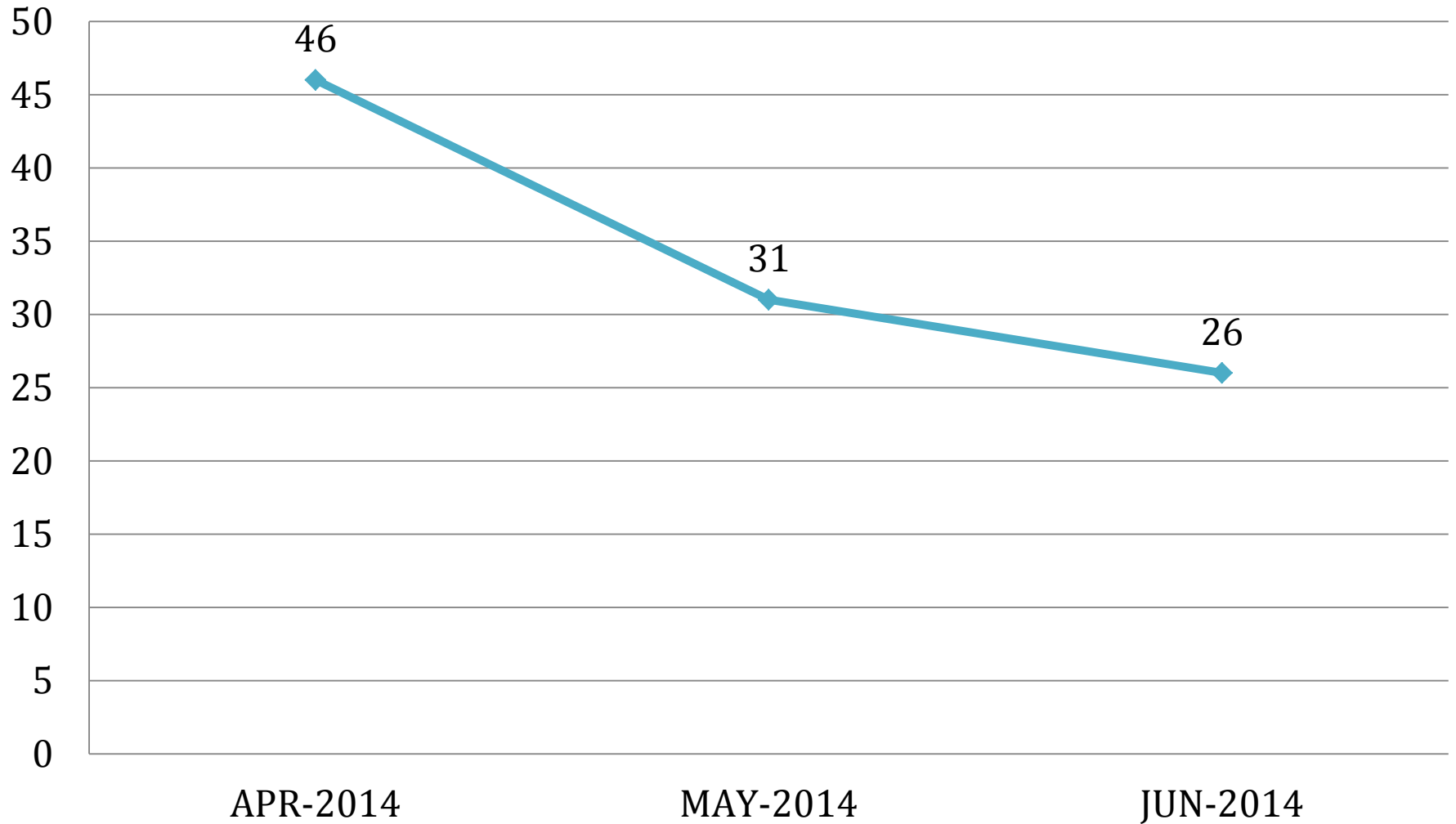
| Inpatient Outcome | Number | Percentage |
|--|--------|------------|
| Stayed in Room | 155 | 84% |
| Decision to Transfer Pt to ICU, Actual Transfer to ICU, | 29 | 16% |

| Outpatient Outcome | Number | Percentage |
|---|--------|------------|
| Stayed in Location | 5 | 50% |
| Decision to Transfer Pt to ICU,, Actual Transfer to ICU, | 2 | 20% |
| Transferred to DEM | 3 | 30% |

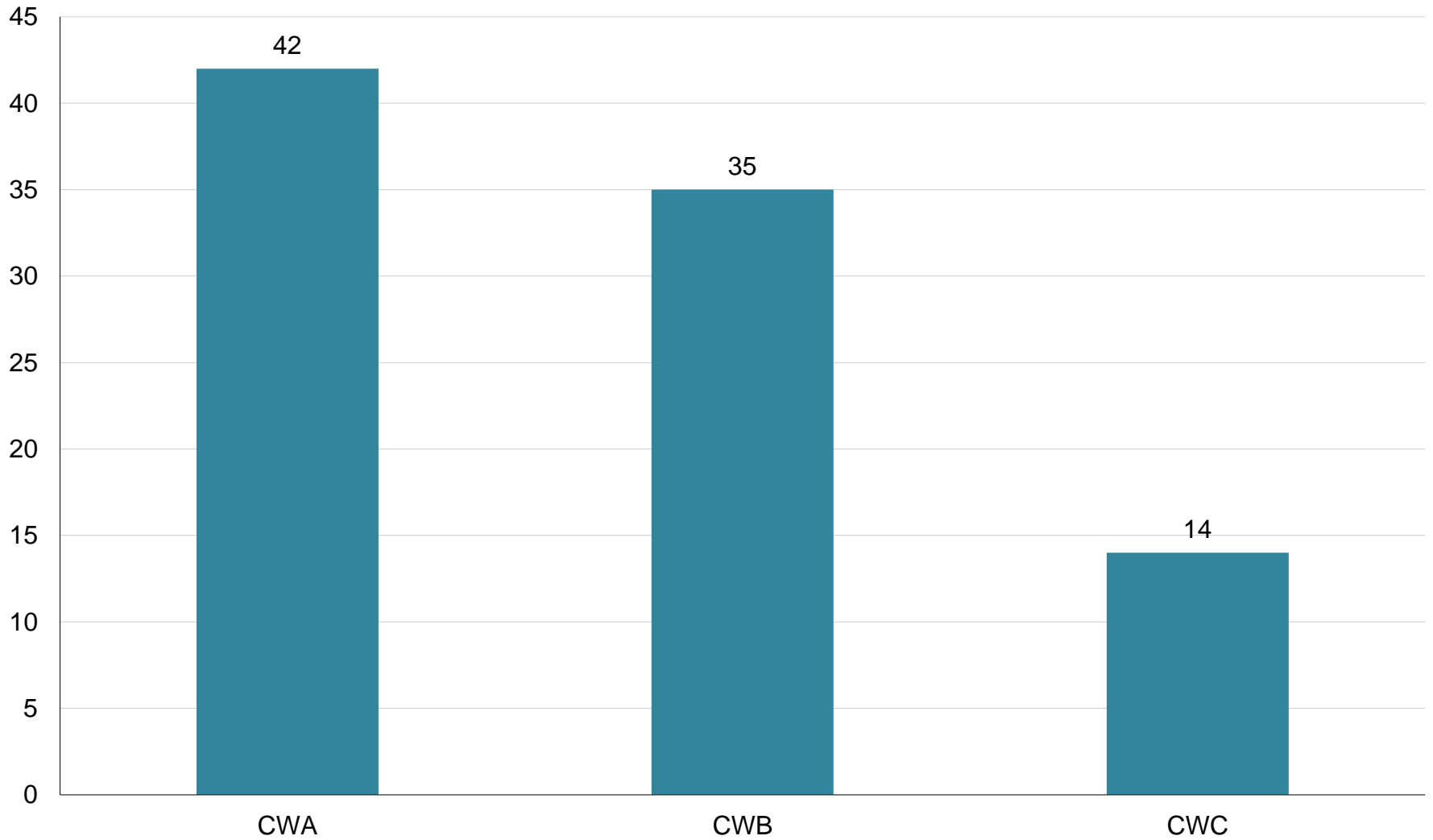
| Transferred Patients to ICU Outcomes | Number | Percentage |
|--------------------------------------|--------|------------|
| Transferred to Unit | 23 | 74% |
| Deceased | 6 | 20% |
| Stayed in ICU | 2 | 6% |

**Rapid Response Team
Report
for Pediatric
In/Out Patients
in CCC**

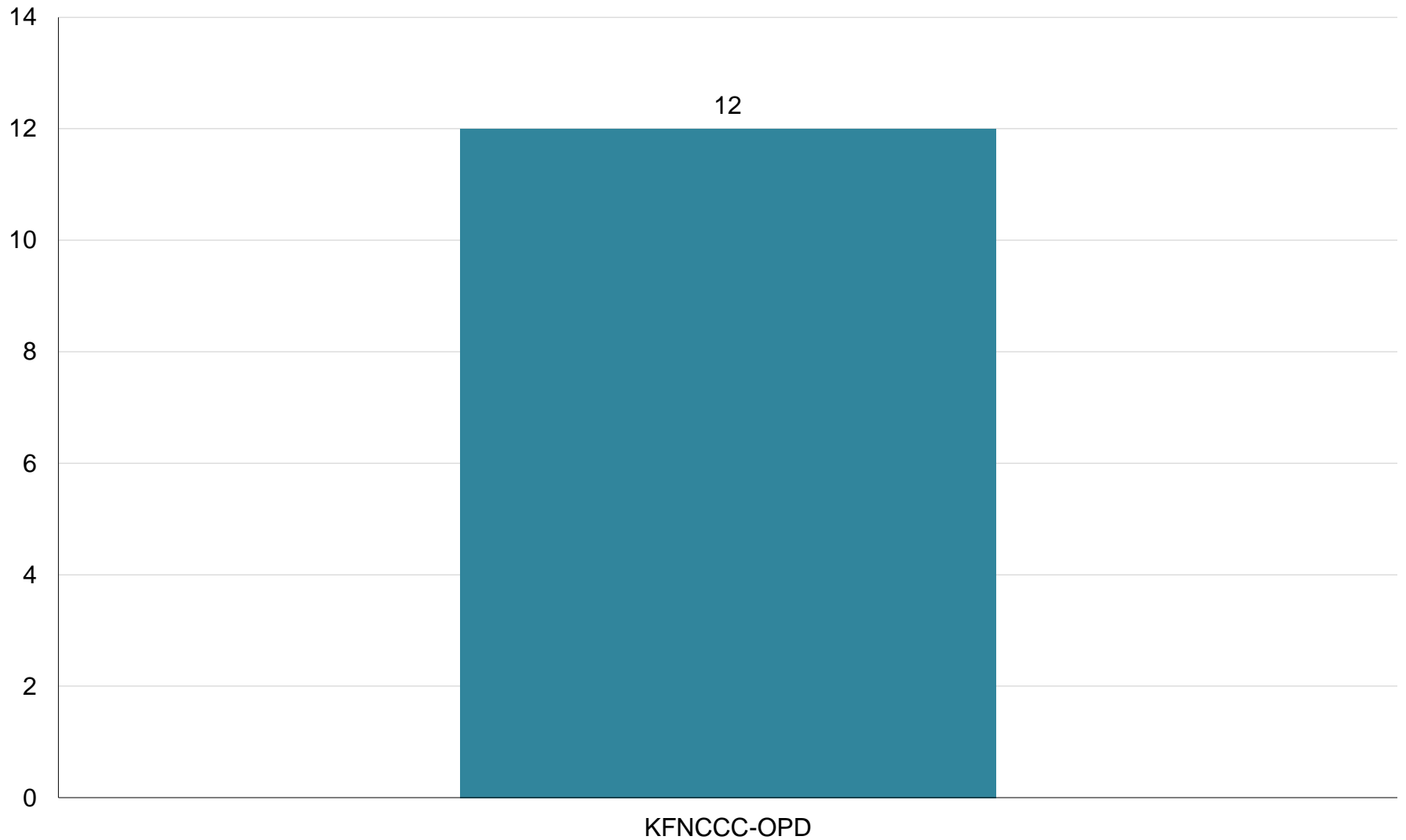
Rapid Response Team Utilization for Adult **In/Out** Patients in CCC



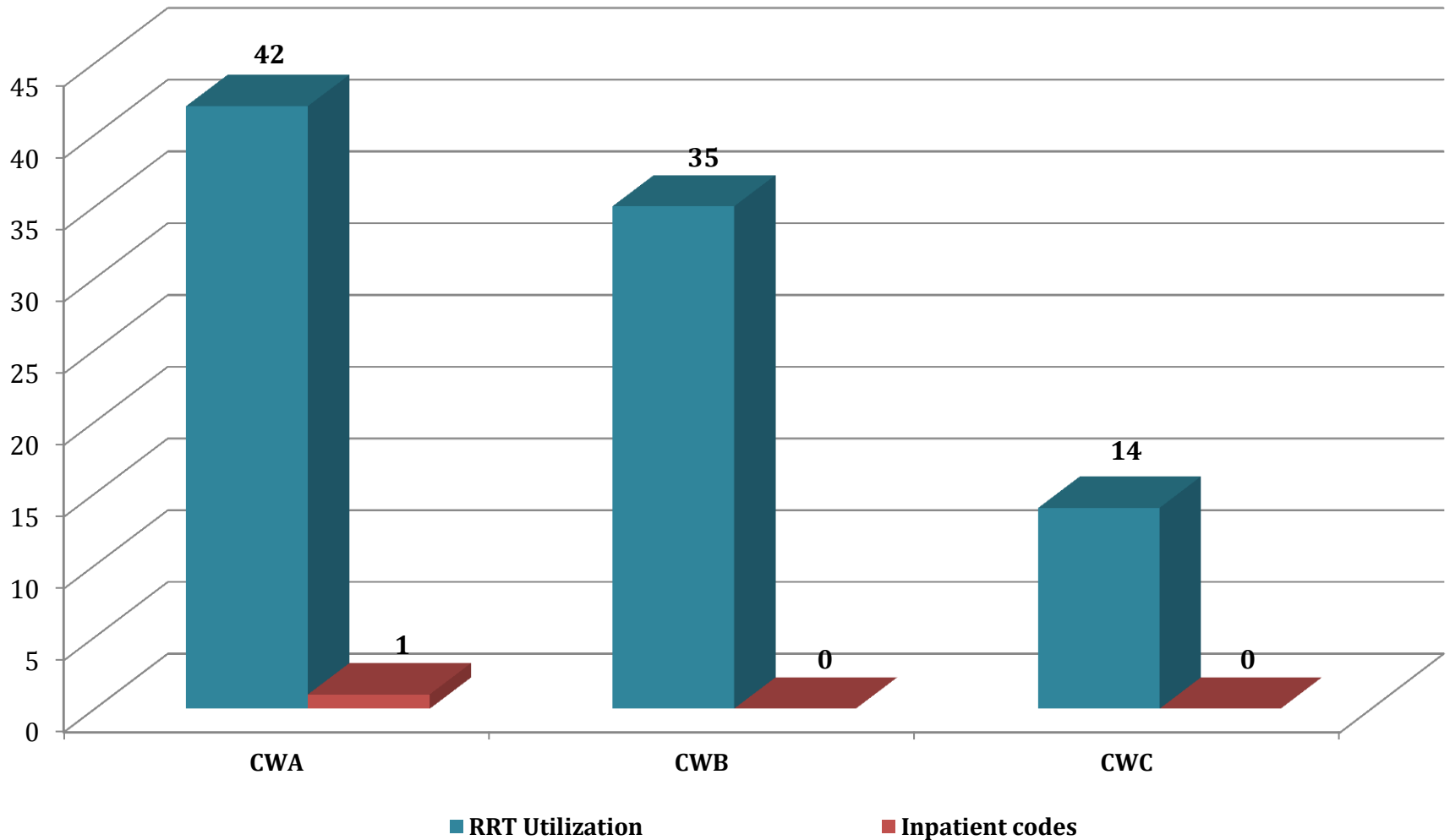
Rapid Response Team Utilization for Pediatric In-Patients in CCC



Rapid Response Team Utilization for Pediatric Out-Patients in CCC



Rapid Response Team Utilization Versus Pediatric In-Patient Codes by Units in CCC 2nd Q 2014



Rapid Response Team Utilization for Pediatric Patients in CCC

| | |
|--|------------|
| Average Length of Stay in ICU | 6 Days |
| RRT utilization average | 97 Minutes |
| Average of First Response Arrival Time | 4 Minutes |

| Inpatient Outcomes | Number | Percentage |
|--|--------|------------|
| Stayed in Room | 77 | 85% |
| Decision to Transfer Pt to ICU, Actual Transfer to ICU, | 14 | 15% |

| Outpatient Outcomes | Number | Percentage |
|--|--------|------------|
| Stayed in Location | 8 | 67% |
| Decision to Transfer Pt to ICU, Actual Transfer to ICU, | 4 | 33% |

| Transferred Patients to ICU Outcomes | Number | Percentage |
|--------------------------------------|--------|------------|
| Transferred to Unit | 17 | 94% |
| Deceased | 1 | 6% |

Thank you

