

Adult Transphenoidal Resection of Pituitary Tumors Clinical Pathway

Clinical Pathway 3rd Quarter Report 2017

Data Collection Period: 01 July 2017 - 30 September 2017

Units using the clinical pathway: C1 & SSCU-B

Data Sources: Retrospective review of Clinical Pathway Forms

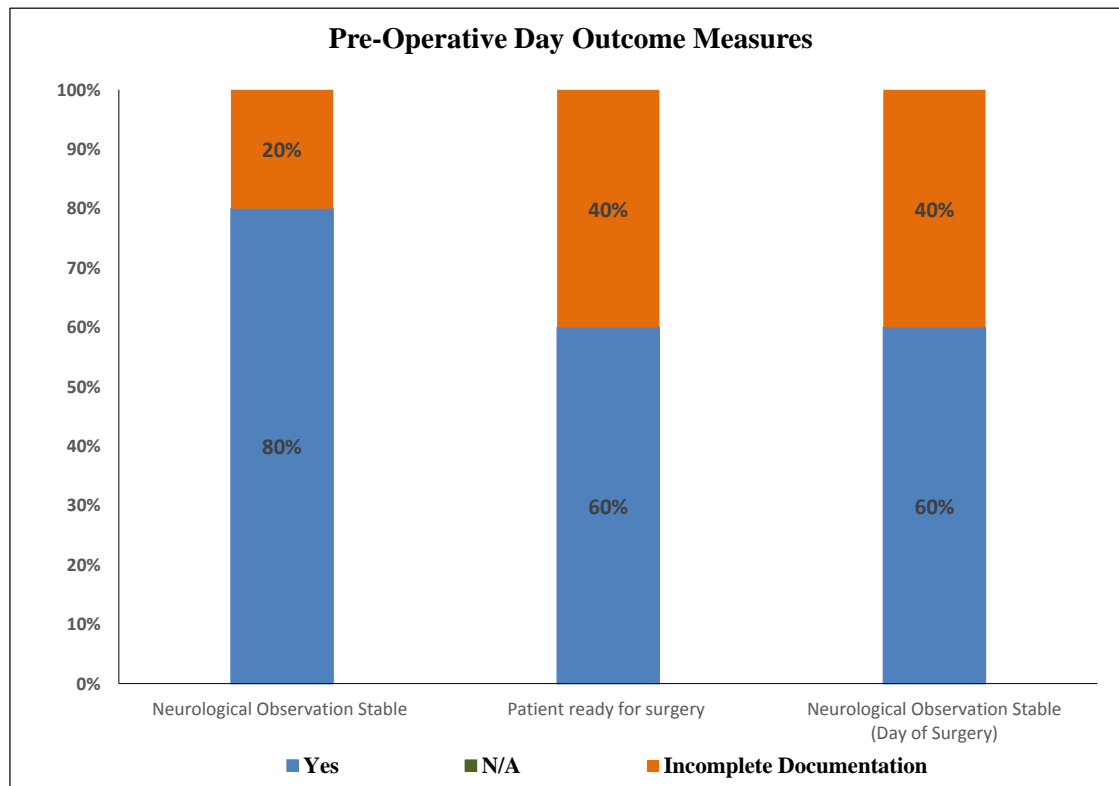
Number of patients who were eligible to be put on the clinical pathway: 6

Number of patients managed on the clinical pathway: **5 (83%)**

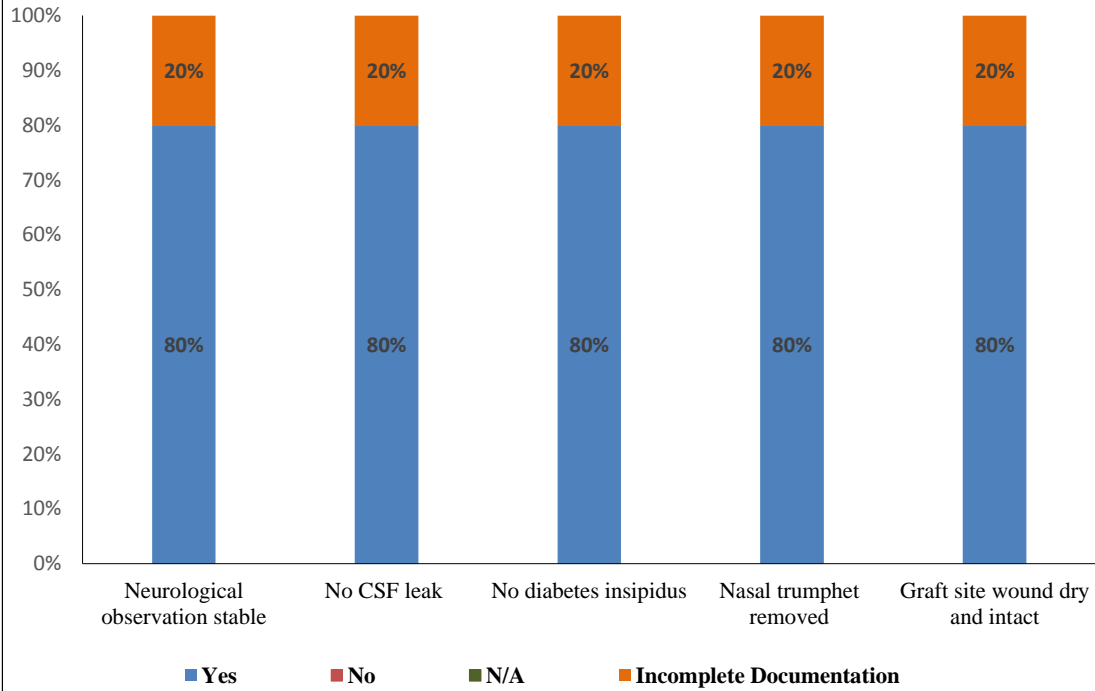
The documentation compliance on the clinical pathway per discipline in the table below:

Discipline	Number of Patients	Complete Documentation	Incomplete Documentation
Medical Doctor	5	72%	28%
C1 Nurse	5	72%	28%

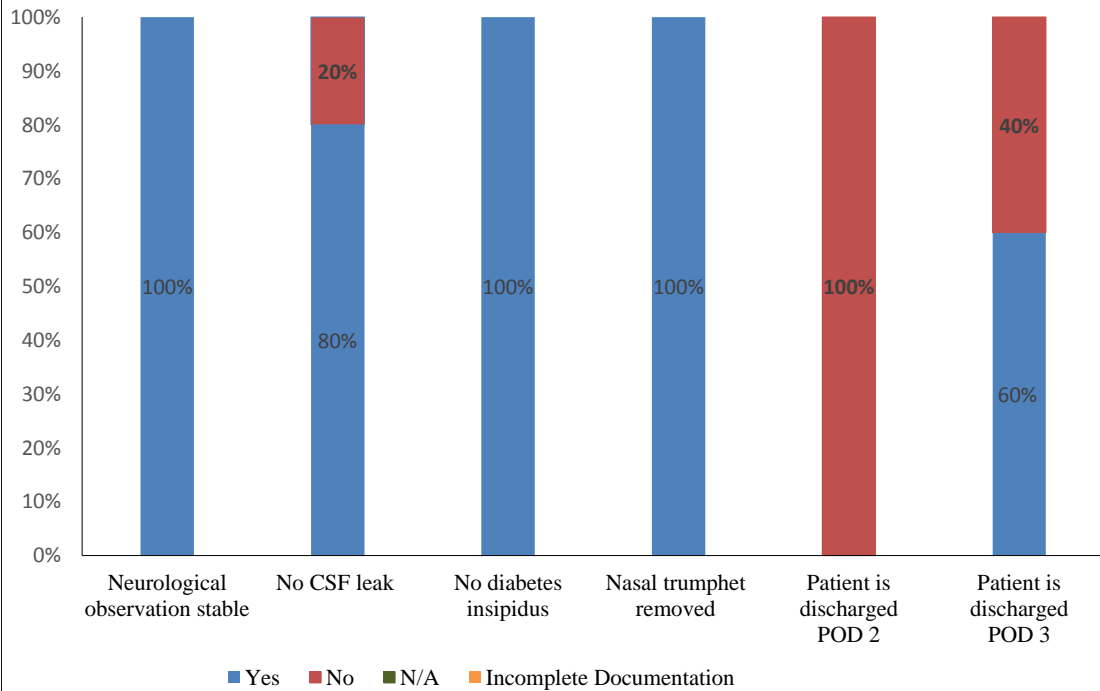
The clinical pathway outcomes Pre and Post Operative Day (POD) are illustrated in the following graphs:

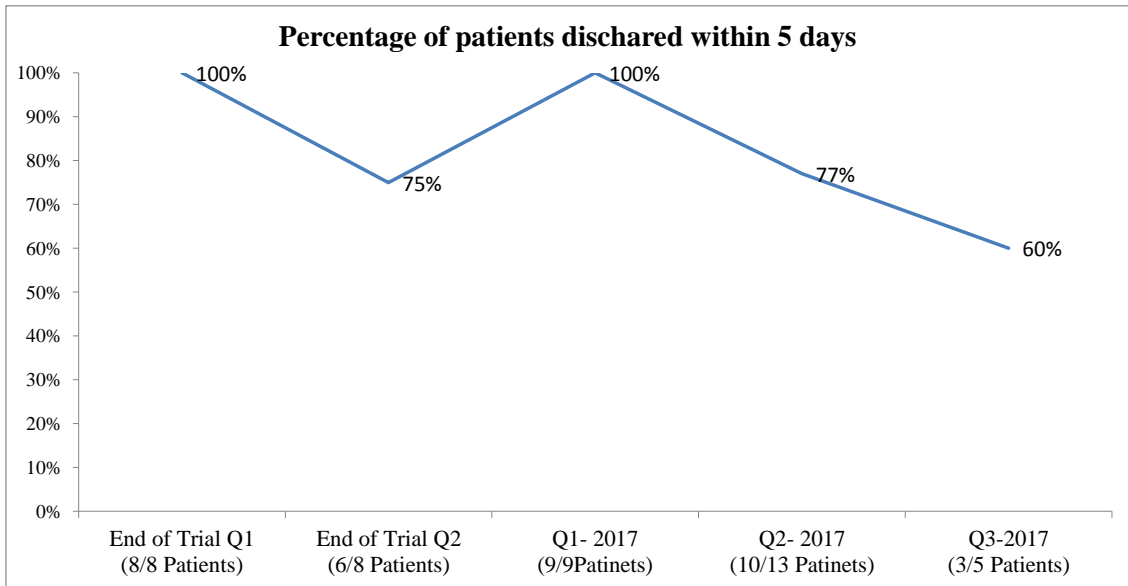
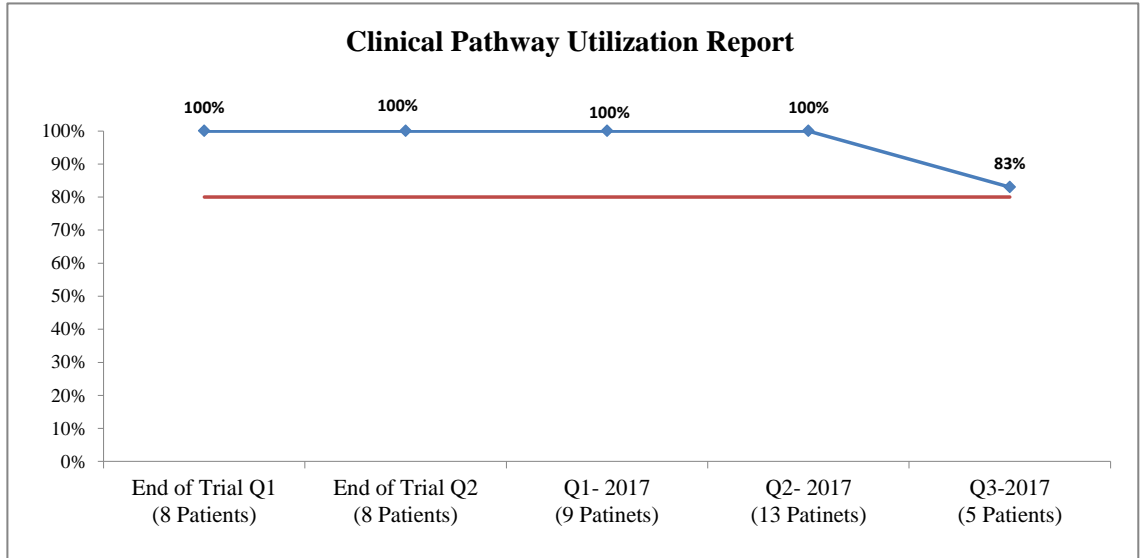
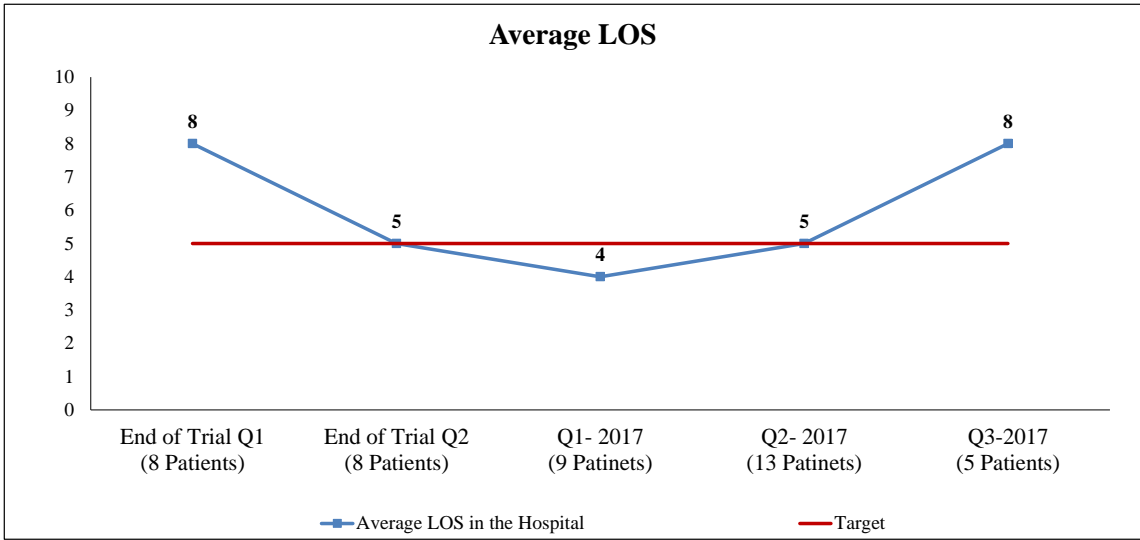


Post-Operative Day One Outcome Measures



Post-Operative Day Two & Three Outcome Measures





Measure:

The ultimate outcome measure for this clinical pathway is to decrease the LOS for all patients to be 5 days Perioperatively.

Findings:

1. The discharge status of all patients managed on this Clinical Pathway is as follow:
 - Zero patients were discharged POD2 which represent (0%).
 - Three patients were discharged POD3 which represent (60%).
 - The remaining two patients were discharged after POD3 which represent (40%) due to the following
 - * one patient had CSF leak.
 - * One patient went back to OR.
2. The average LOS for the (5) patients in the hospital is **8 Days**.
3. The utilization of this clinical pathway is **83%** above the trigger.

Follow Up Action plan:

1. The report to be shared with the respective Healthcare Provider/ Medical Quality Director / Clinical Pathway Coordinator.
2. In-Services will be provided to the units where the Clinical Pathway is implemented to improve documentation and utilization.