



## Adult Transphenoidal Resection of Pituitary Tumors Clinical Pathway

Clinical Pathway 4th Quarter Report 2017

Data Collection Period: 01 October 2017 - 31 December 2017

Units using the clinical pathway: C1 & SSCU-B

Data Sources: Retrospective review of Clinical Pathway Forms

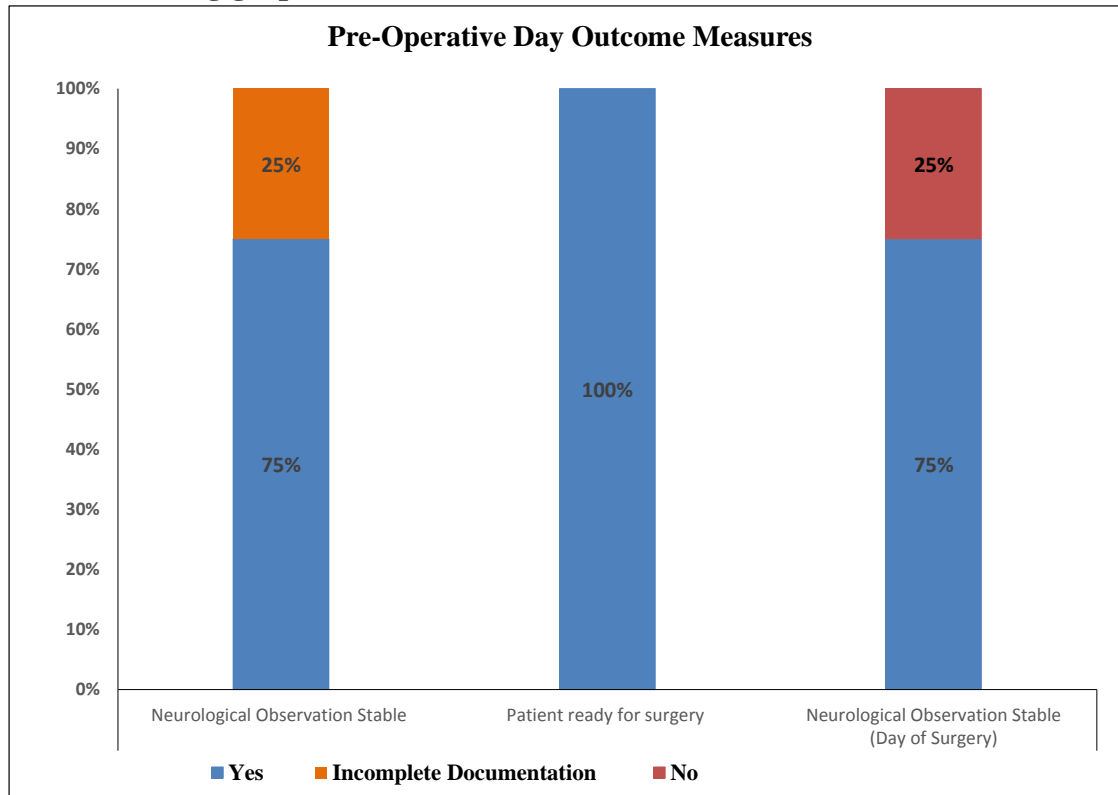
Number of patients who were eligible to be put on the clinical pathway: 5

Number of patients managed on the clinical pathway: **4 (80%)**

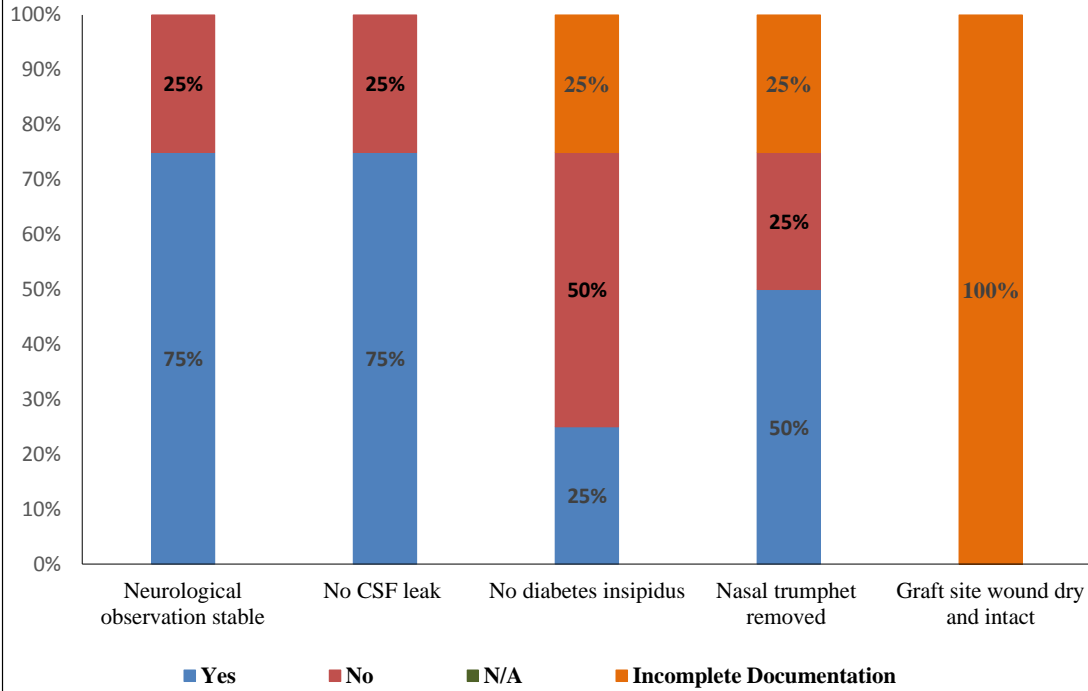
**The documentation compliance on the clinical pathway per discipline in the table below:**

Discipline	Number of Patients	Complete Documentation	Incomplete Documentation
Medical Doctor	4	90%	10%
C1 Nurse	3	87%	17%
SSCU-B	1	57%	43%

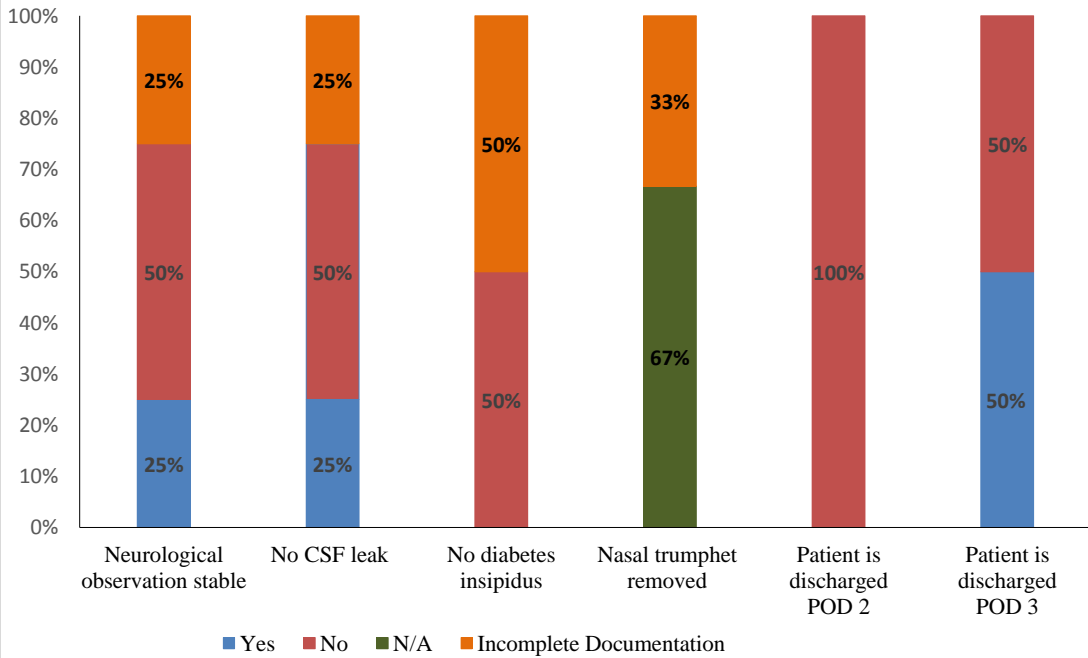
**The clinical pathway outcomes Pre and Post Operative Day (POD) are illustrated in the following graphs:**

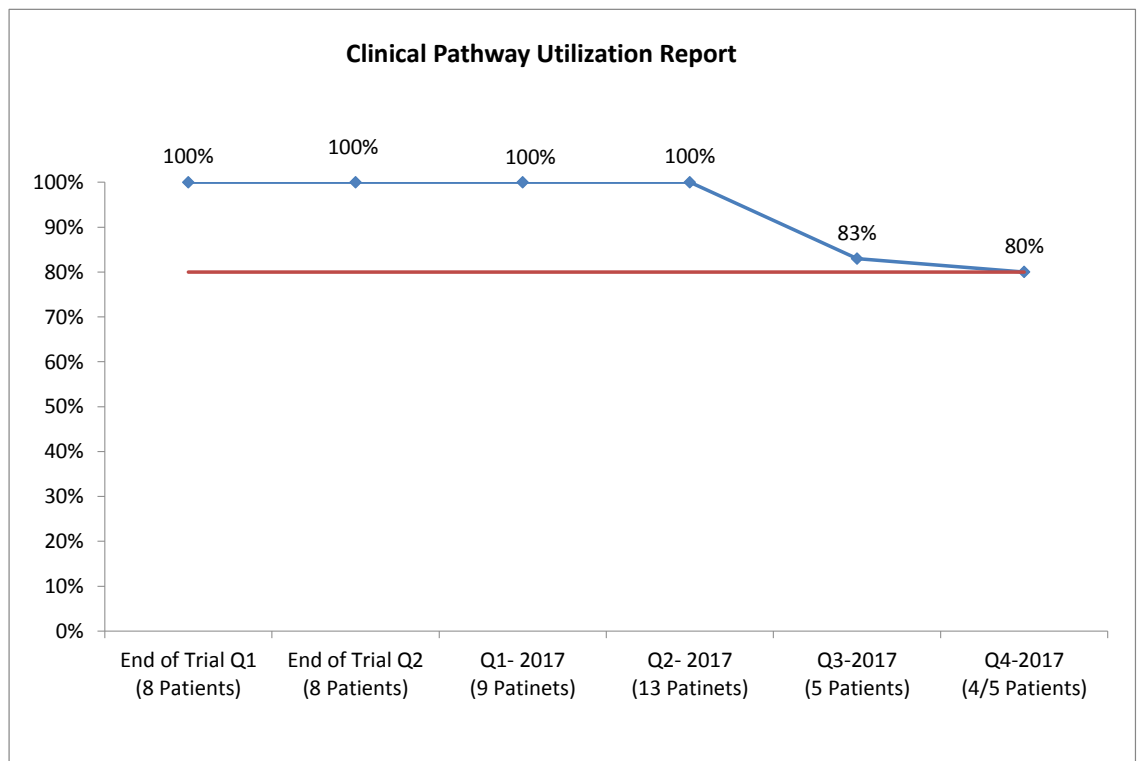
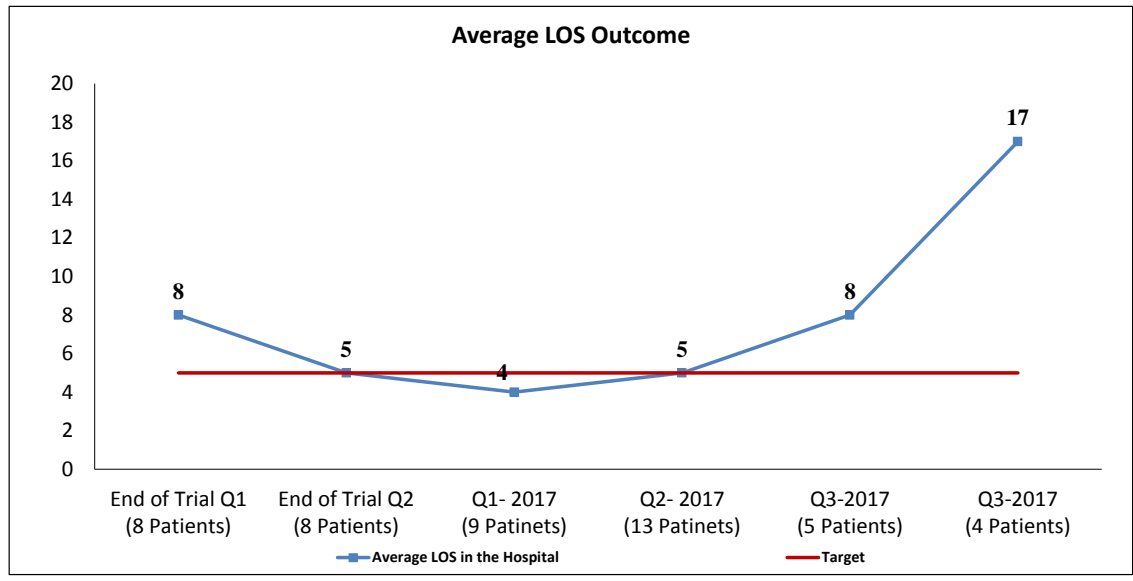


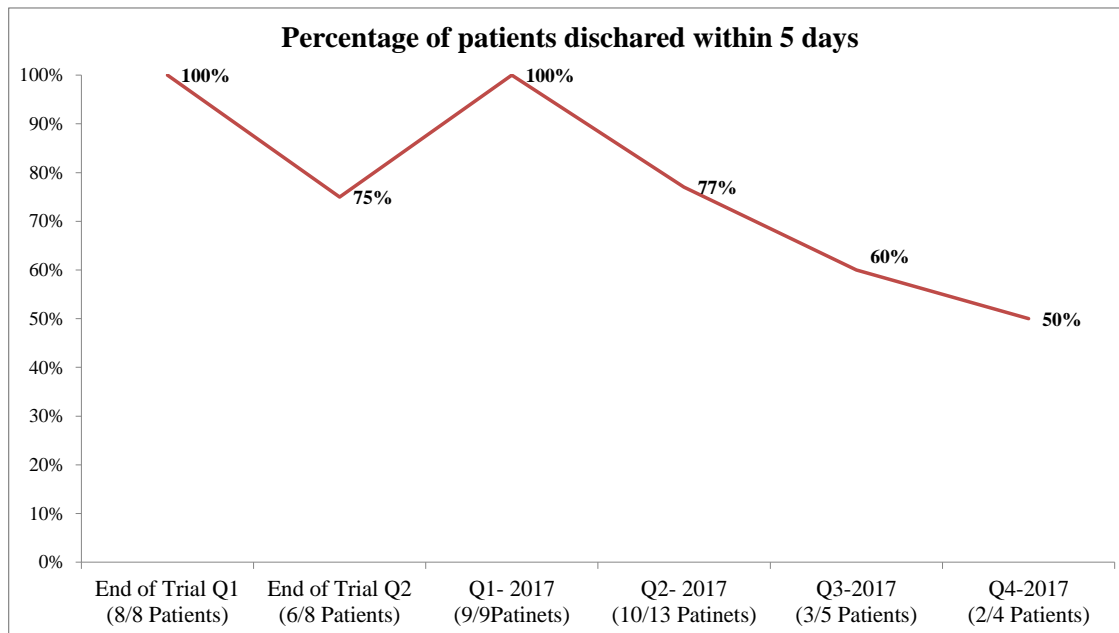
### Post-Operative Day One Outcome Measures



### Post-Operative Day Two & Three Outcome Measures







### Measure:

The ultimate outcome measure for this clinical pathway is to decrease the LOS for all patients to be 5 days Perioperatively.

### Findings:

1. The discharge status of all patients managed on this Clinical Pathway is as follow:
  - Zero patients were discharged POD2 which represent (0%).
  - Three patients were discharged POD3 which represent (50%).
  - The remaining two patients were discharged after POD3 which represent (50%) due to the following reasons:
    - \* one patient had CSF leak.
    - \* One patient went back multiple times to OR.
2. The average LOS for the (4) patients in the hospital is **17 Days**.
3. The utilization of this clinical pathway is **80%** equal the trigger.

### Follow Up Action plan:

1. The report to be shared with the respective Healthcare Provider/ Medical Quality Director / Clinical Pathway Coordinator.
2. Plan to move the CP to automation version soon.
3. In-Services will be provided to the units where the Clinical Pathway is implemented to improve documentation and utilization.