



Adult Transphenoidal Resection of Pituitary Tumors Clinical Pathway

Clinical Pathway 1st Quarter Report 2018

Data Collection Period: 01 January 2018 - 31 March 2018

Units using the clinical pathway: C1 & SSCU-B

Data Sources: Retrospective review of Clinical Pathway Forms

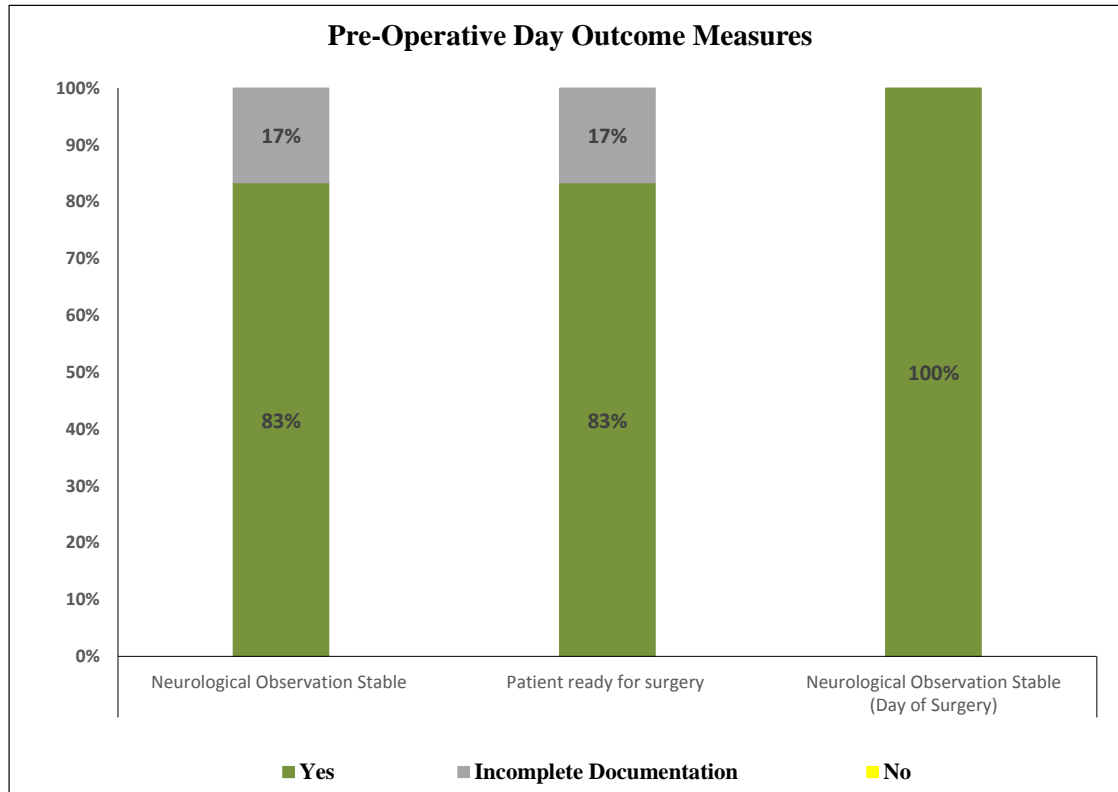
Number of patients who were eligible to be put on the clinical pathway: 8

Number of patients managed on the clinical pathway: **6 (75%)**

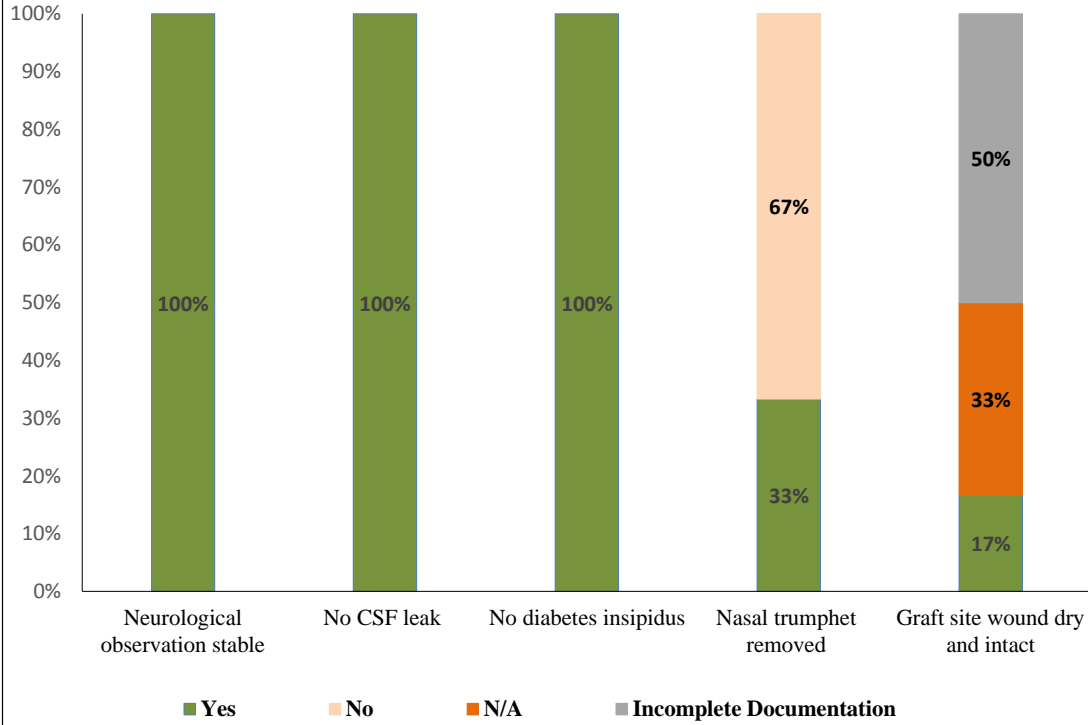
The documentation compliance on the clinical pathway per discipline in the table below:

Discipline	Number of Patients	Complete Documentation	Incomplete Documentation
Medical Doctor	6	90%	10%
C1 Nurse	6	100%	0%

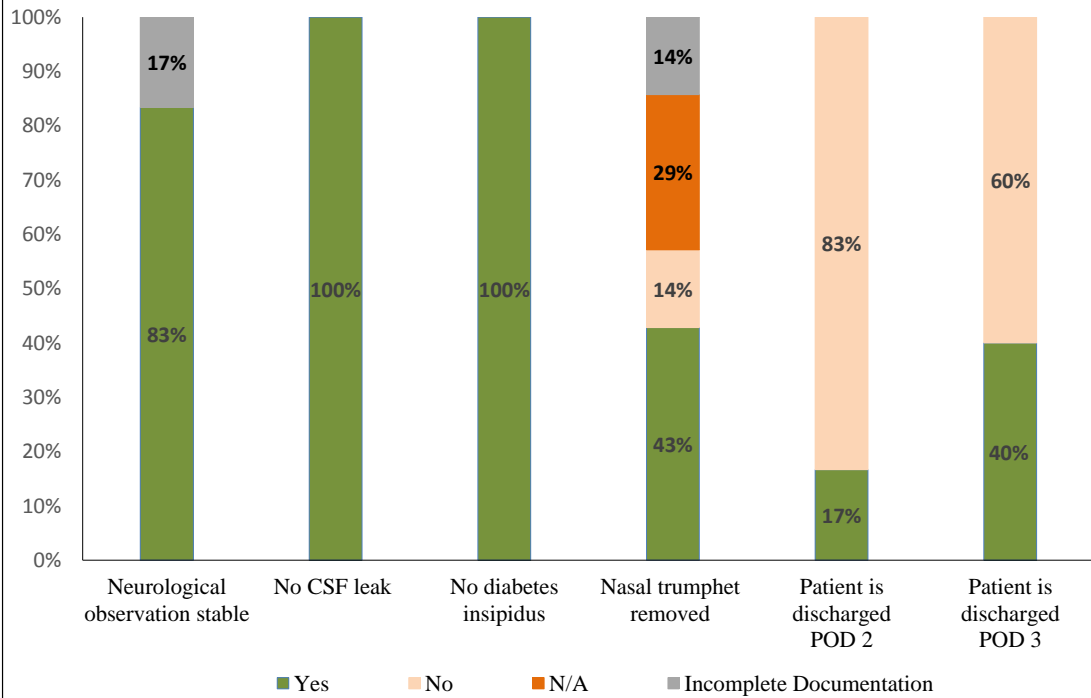
The clinical pathway outcomes Pre and Post Operative Day (POD) are illustrated in the following graphs:



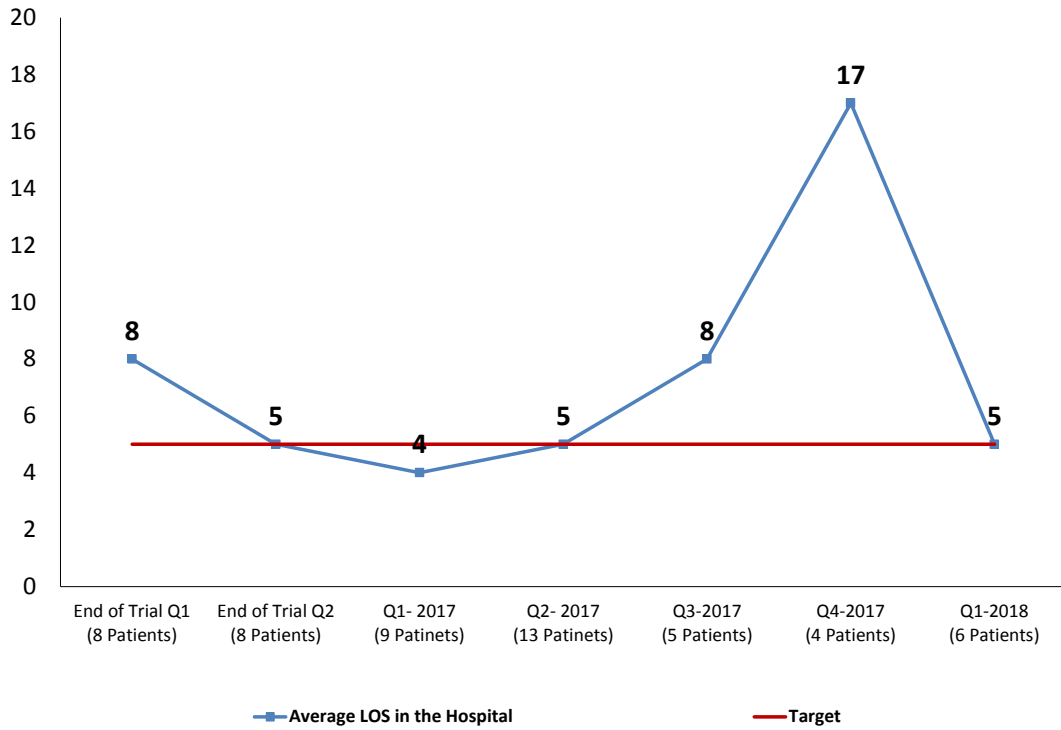
Post-Operative Day One Outcome Measures



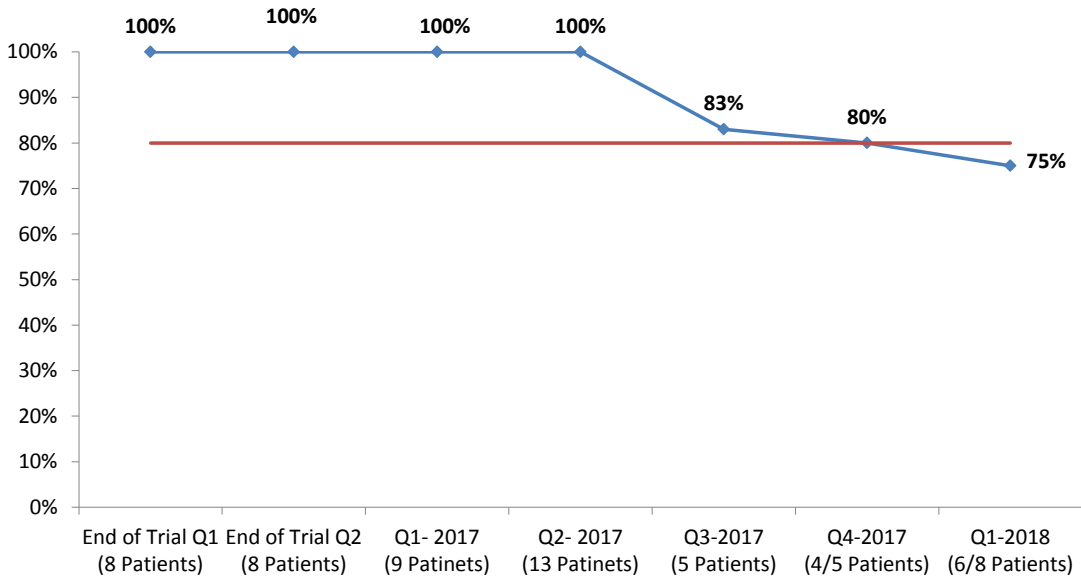
Post-Operative Day Two & Three Outcome Measures

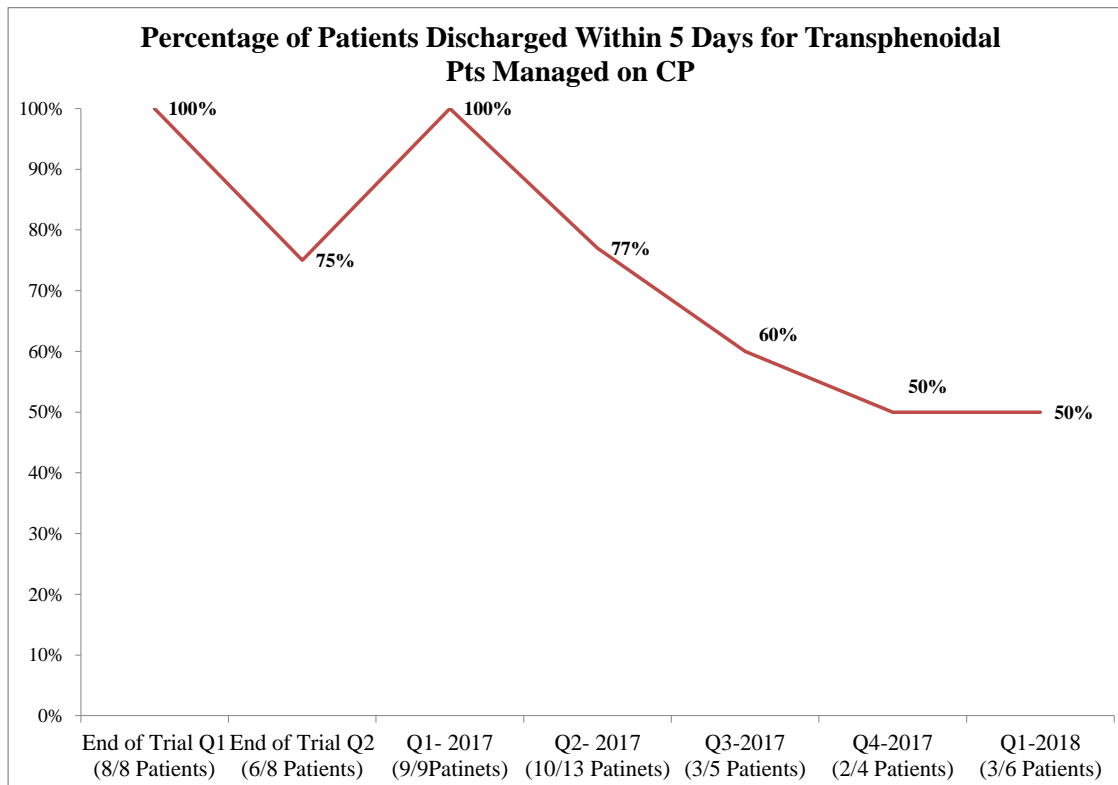


Average LOS Outcome for Patient Managed on Transphenoidal CP



Clinical Pathway Utilization Report





Measure:

The ultimate outcome measure for this clinical pathway is to decrease the LOS for all patients to be 5 days perioperatively.

Findings:

1. The discharge status of all patients managed on this Clinical Pathway is as follow:
 - Zero patients were discharged POD2 which represent (0%).
 - Three patients were discharged POD3 which represent (50 %).
 - The remaining three patients were discharged after POD3 which represent (50%) due to the following reasons:
 - * one patient had lumber drain catheter.
 - * One patient with high risk of bleeding. * One patient waiting for other service consultation.
2. The average LOS for the (6) patients in the hospital is **5 Days**.
3. The utilization of this clinical pathway is **75%** equal the trigger.

Follow Up Action plan:

1. The report to be shared with the respective Healthcare Provider/ Medical Quality Director / Clinical Pathway Coordinator.
2. Plan to move the CP to automation version soon.
3. In-Services will be provided to the units where the Clinical Pathway is implemented to improve documentation and utilization.