



Adult Transphenoidal Resection of Pituitary Tumors Clinical Pathway

Clinical Pathway 3rd Quarter Report 2018

Data Collection Period: 01 July 2018 - 30 September 2018.

Units using the clinical pathway: C1 & SSCU-B

Data Sources: Retrospective review of Clinical Pathway Forms

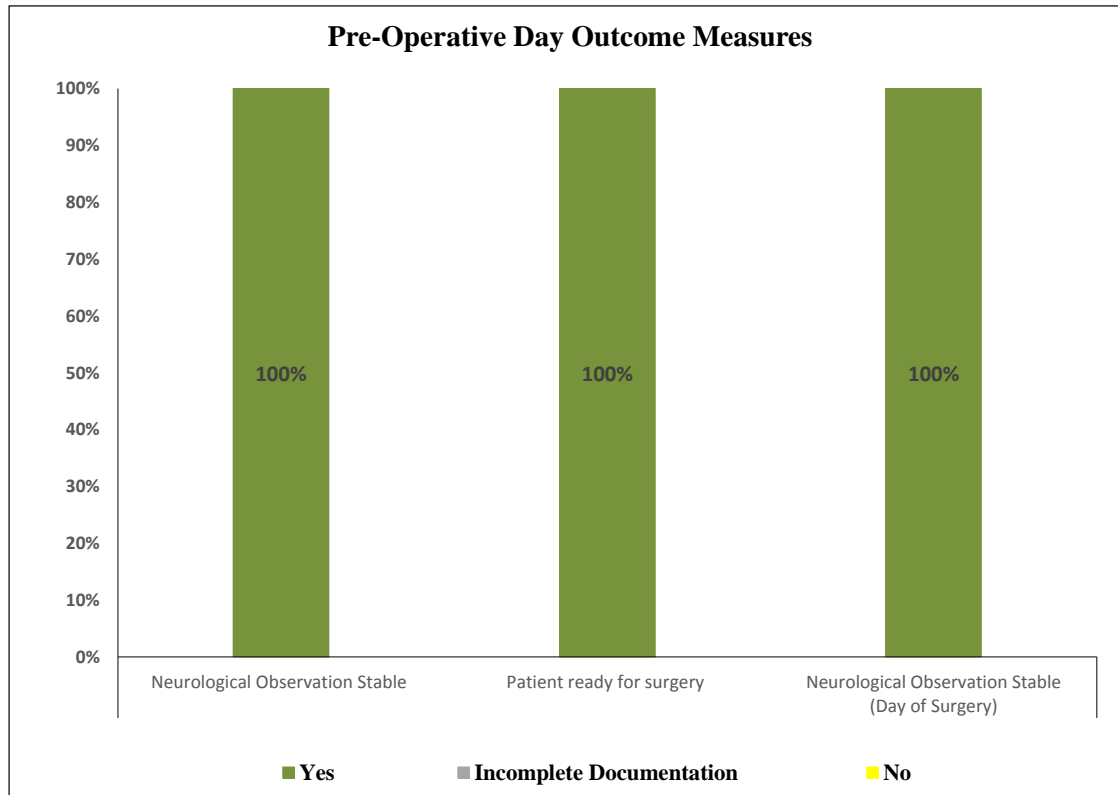
Number of patients who were eligible to be put on the clinical pathway: 6

Number of patients managed on the clinical pathway: **6 (100%)**.

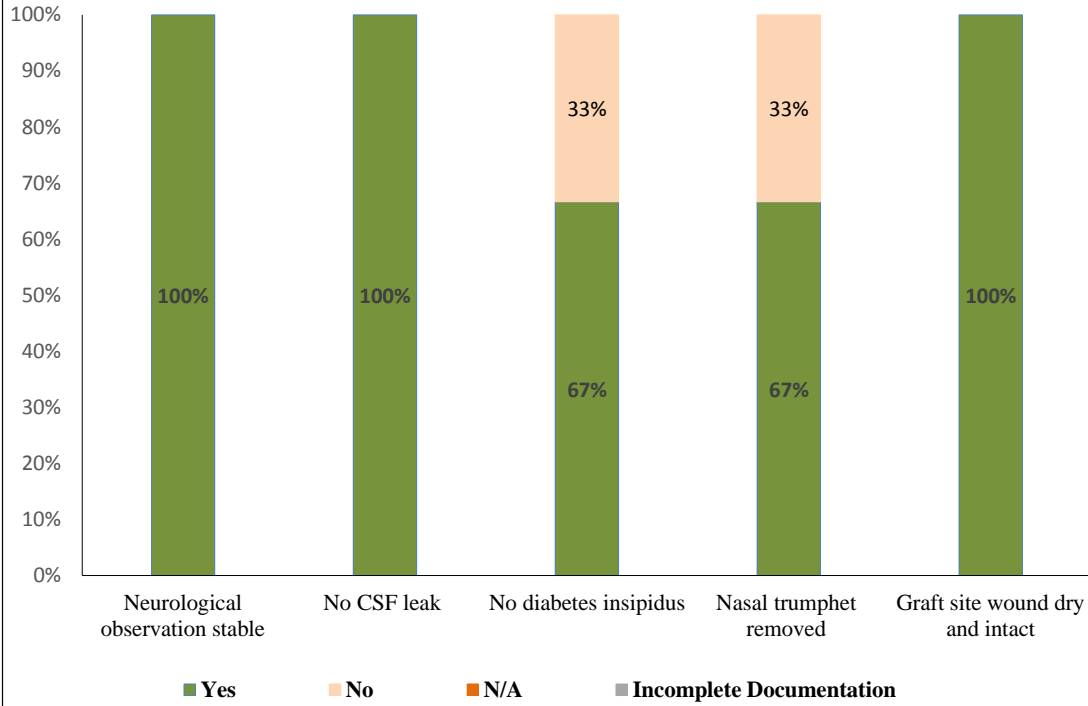
The documentation compliance on the clinical pathway per discipline in the table below:

Discipline	Number of Patients	Complete Documentation	Incomplete Documentation
Medical Doctor	6	67%	33%
C1 Nurse	6	90%	10%

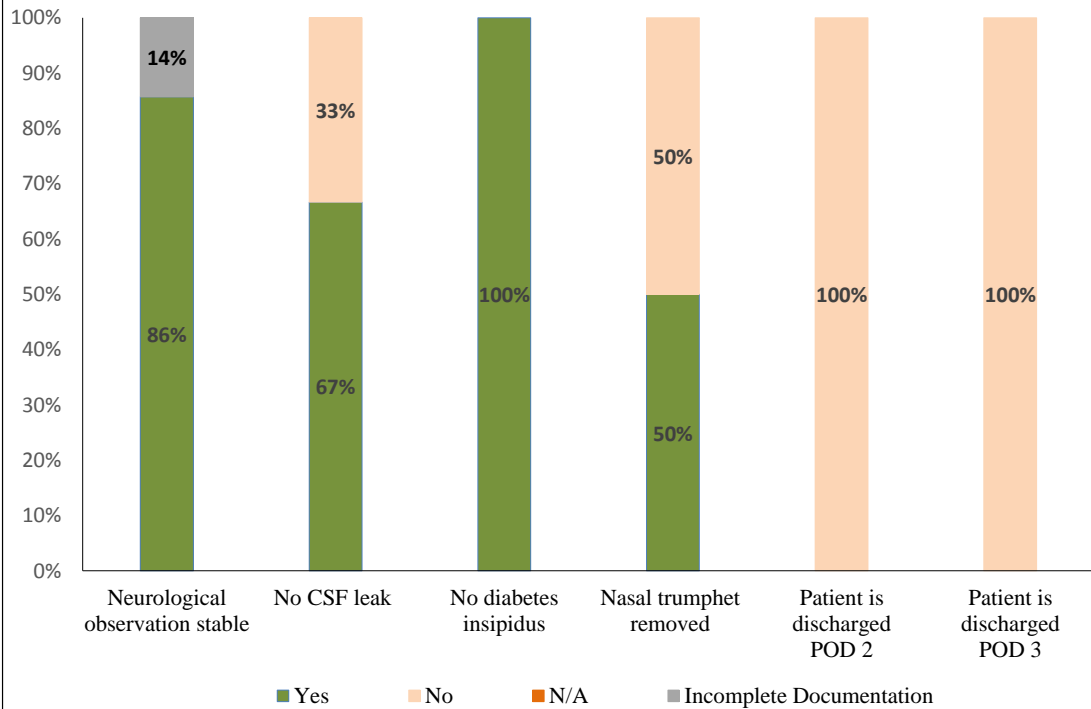
The clinical pathway outcomes Pre and Post Operative Day (POD) are illustrated in the following graphs:



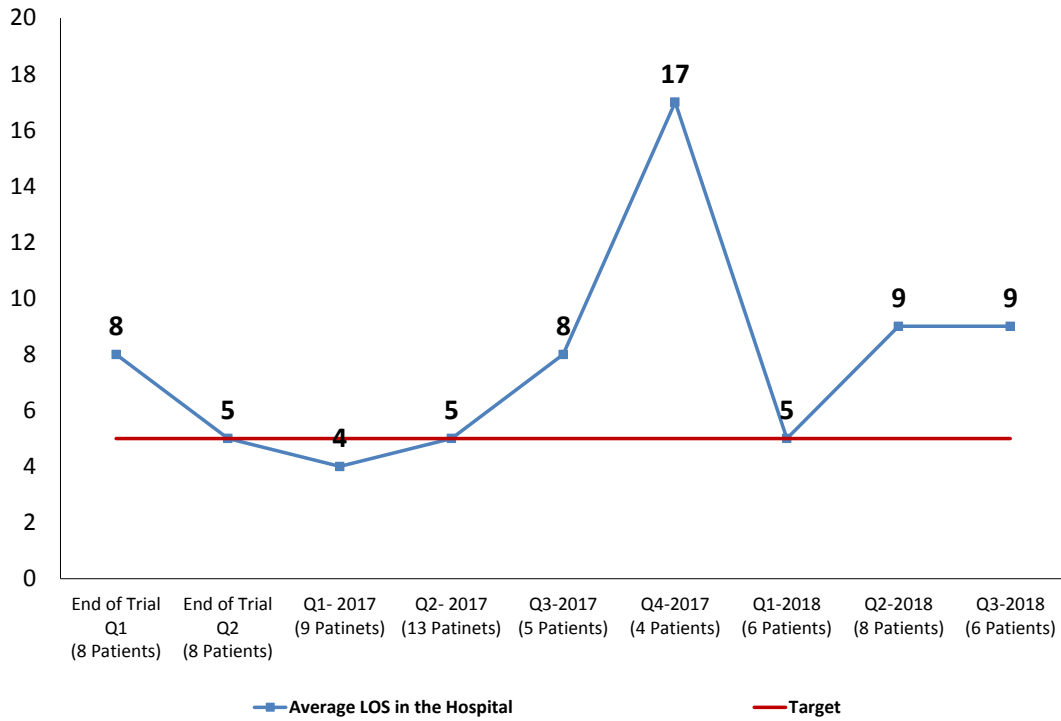
Post-Operative Day One Outcome Measures



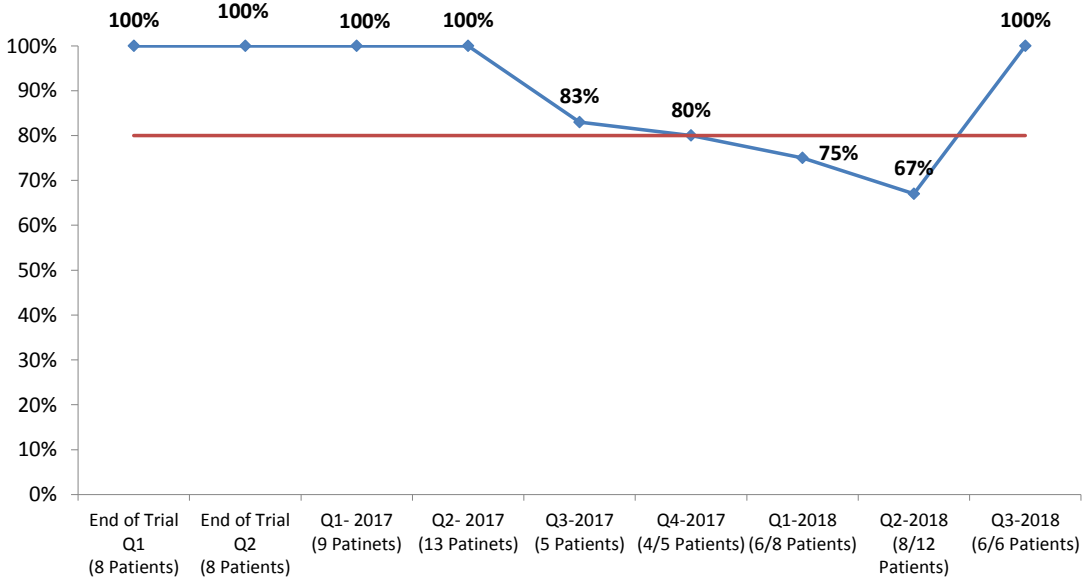
Post-Operative Day Two & Three Outcome Measures

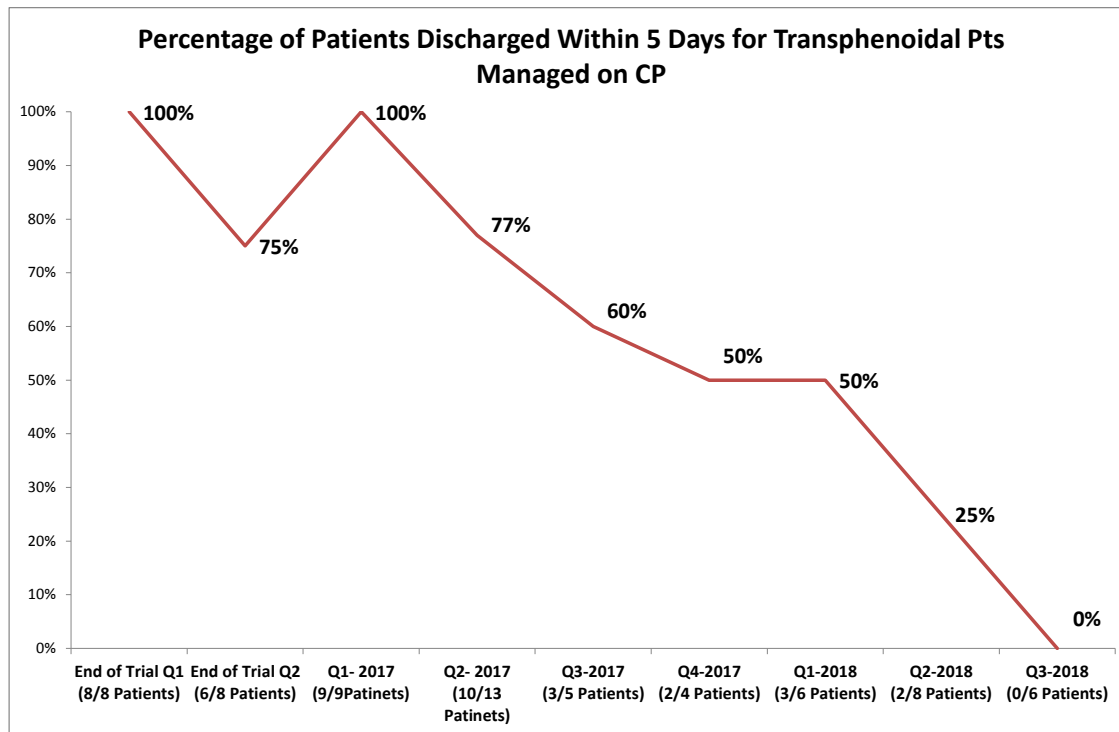


Average LOS Outcome for Patient Managed on Transphenoidal CP



Clinical Pathway Utilization Report





Measure:

The ultimate outcome measure for this clinical pathway is to decrease the LOS for all patients to be 5 days perioperatively.

Findings:

1. The discharge status of all patients managed on this Clinical Pathway is as follow:

- All patients were discharged **POD3** due to the following reasons:

- * Two patients had nasal discharge.
- * Two patients experienced electrolytes imbalance .
- * One patient developed diabetes insipidus.
- * One patient was waiting for other service consultation.

2. The average LOS for the (6) patients in the hospital is **9 days**.

3. The utilization of this clinical pathway is **100%** .

Follow Up Action plan:

1. The report to be shared with the respective Healthcare Provider/ Medical Quality Director / Clinical Pathway Coordinator.

2. Plan to move the CP to automation version soon.

3. In-Services will be provided to the units where the Clinical Pathway is implemented to improve documentation and utilization.