



Adult Transphenoidal Resection of Pituitary Tumors Clinical Pathway

Clinical Pathway 1st Quarter Report 2019

Data Collection Period: 01 January 2019- 31 March 2019

Units using the clinical pathway: C1 & SSCU-B

Data Sources: Retrospective review of Clinical Pathway Forms

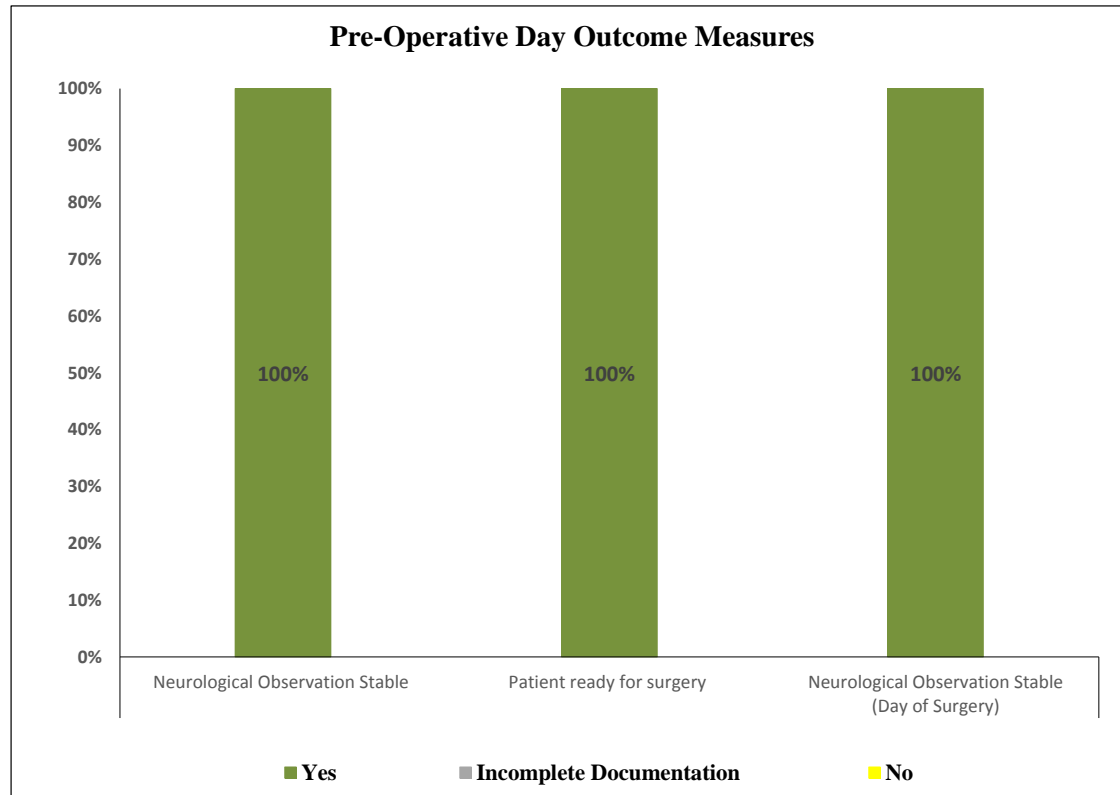
Number of patients who were eligible to be put on the clinical pathway: 8

Number of patients managed on the clinical pathway: **8 (100%)**.

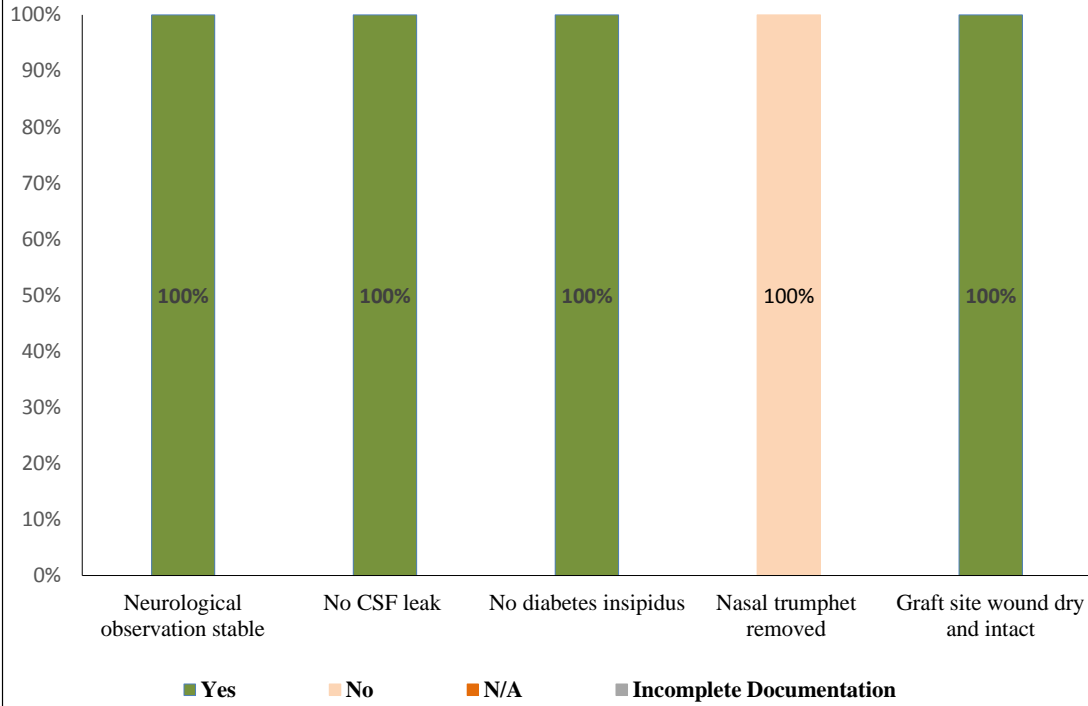
The documentation compliance on the clinical pathway per discipline in the table below:

Discipline	Number of Patients	Complete Documentation	Incomplete Documentation
Medical Doctor	8	85%	15%
C1 Nurse	7	90%	10%
SSCUB Nurse	1	90%	10%

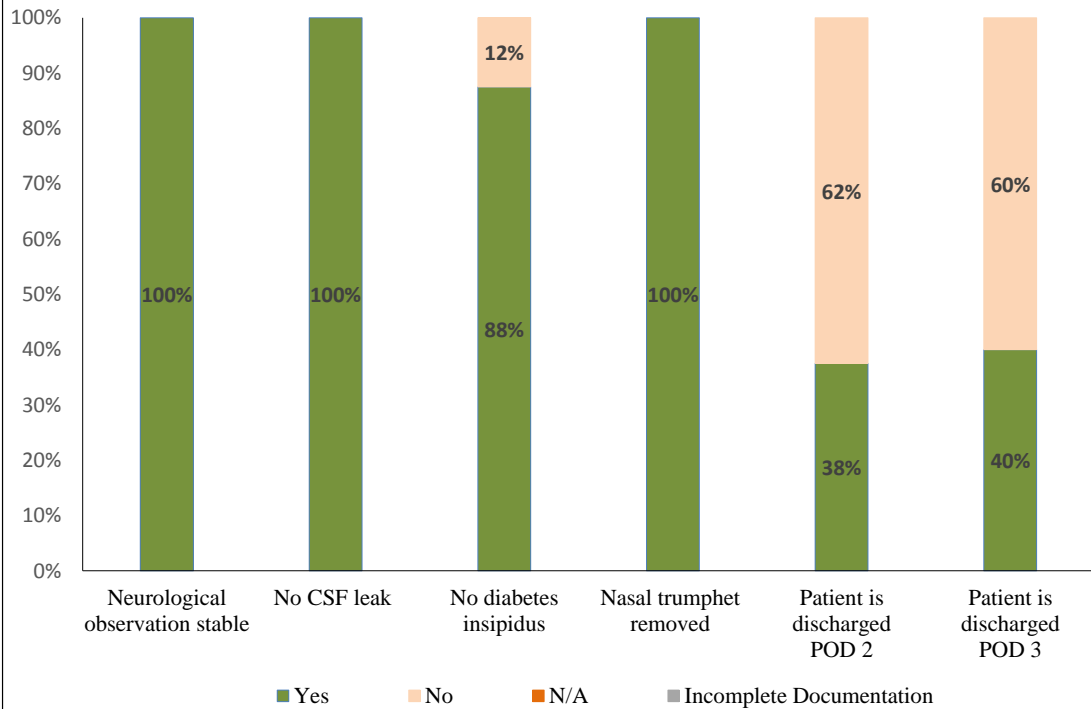
The clinical pathway outcomes Pre and Post Operative Day (POD) are illustrated in the following graphs:



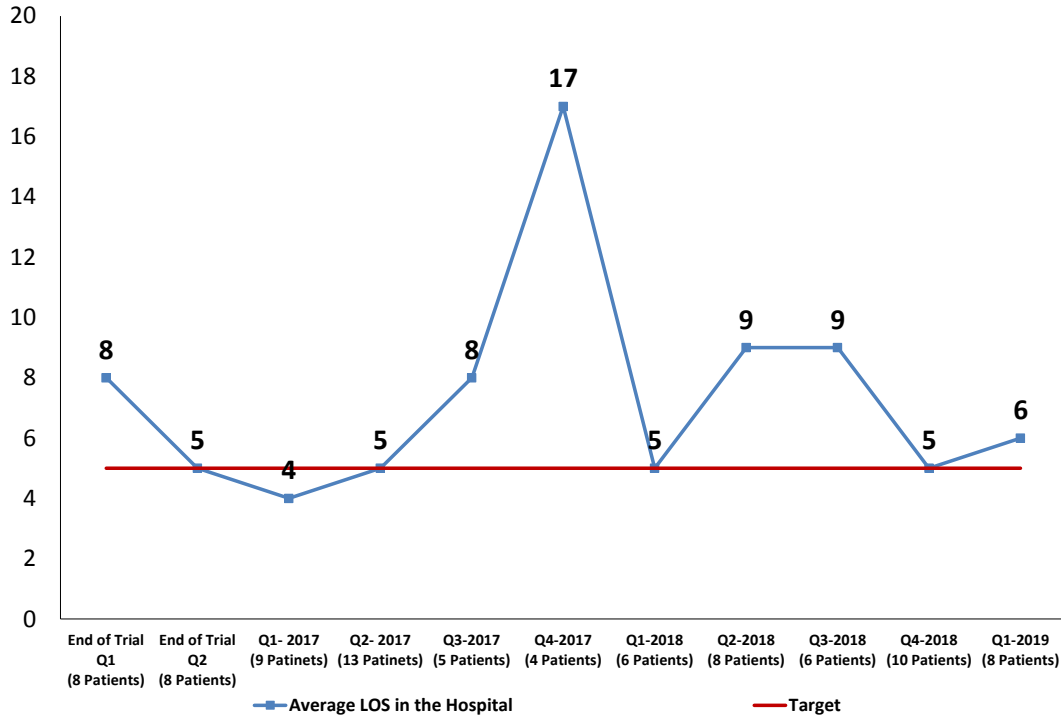
Post-Operative Day One Outcome Measures



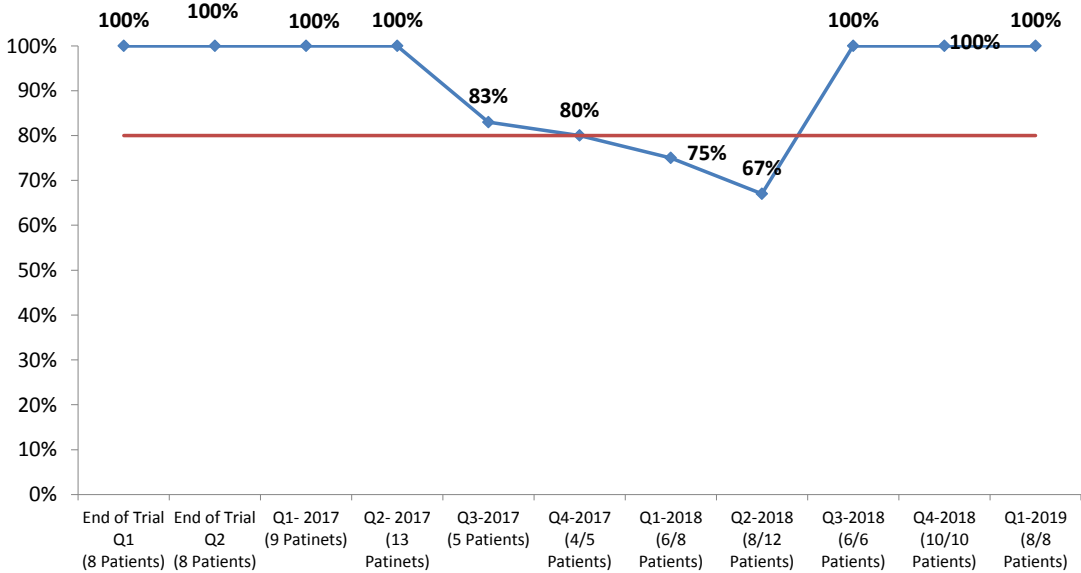
Post-Operative Day Two & Three Outcome Measures

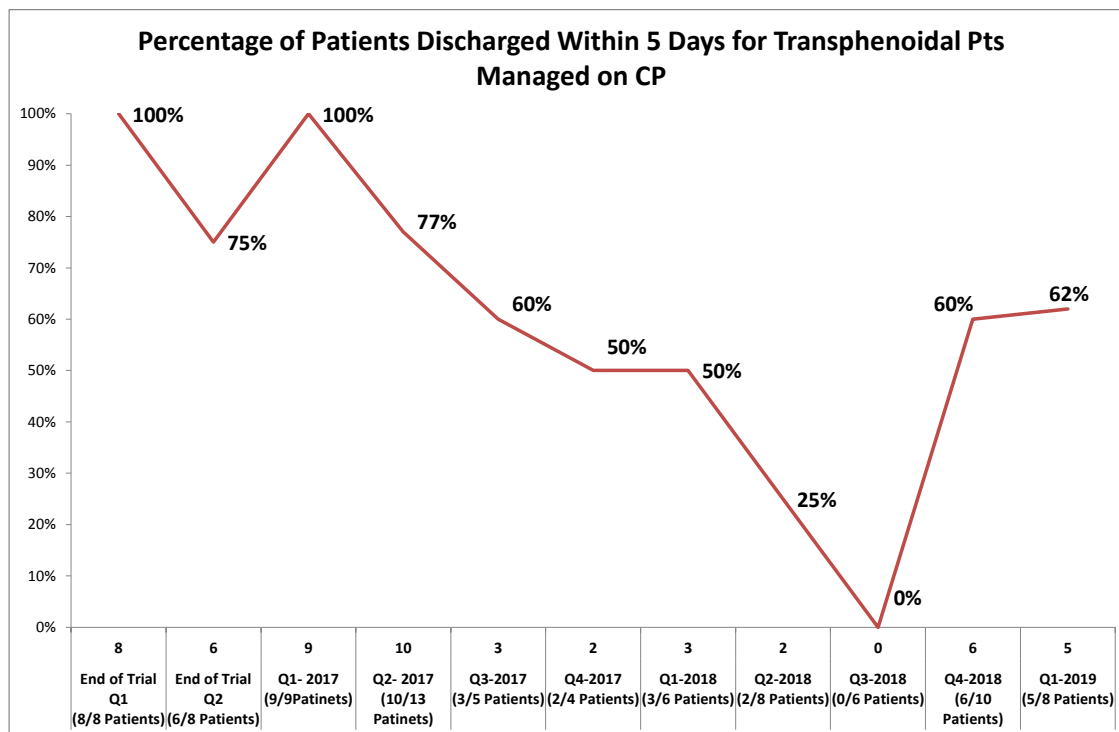


Average LOS Outcome for Patient Managed on Transphenoidal CP



Clinical Pathway Utilization Report





Measure:

The ultimate outcome measure for this clinical pathway is to decrease the LOS for all patients to be 5 days perioperatively.

Findings:

- The discharge status of all patients managed on this Clinical Pathway is as follow:
 - Two patients were not discharged **POD3** because they were awaiting other service consultation.
 - One patient deteriorated post-op.
- The average LOS for the (8) patients in the hospital is **6 days**.
- The utilization of this clinical pathway is **100%** .

Follow Up Action plan:

- The report to be shared with the respective Healthcare Provider/ Medical Quality Director / Clinical Pathway Coordinator.
- Plan to move the CP to automation version soon.
- In-Services will be provided to the units where the Clinical Pathway is implemented to improve documentation and utilization.