



Suspected Spinal Cord Compression Clinical Pathway Report

Clinical Pathway 3rd Quarter Report 2020

Data Collection Period: 01 April 2020 - 30 June 2020.

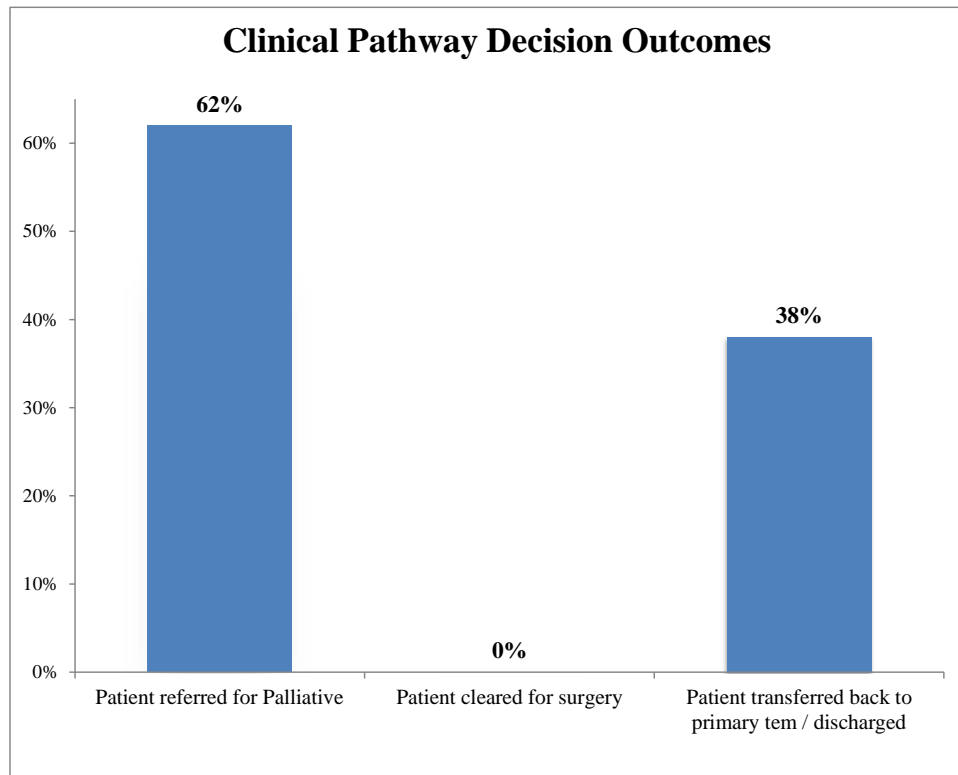
Units using the clinical pathway: Hospital Wide

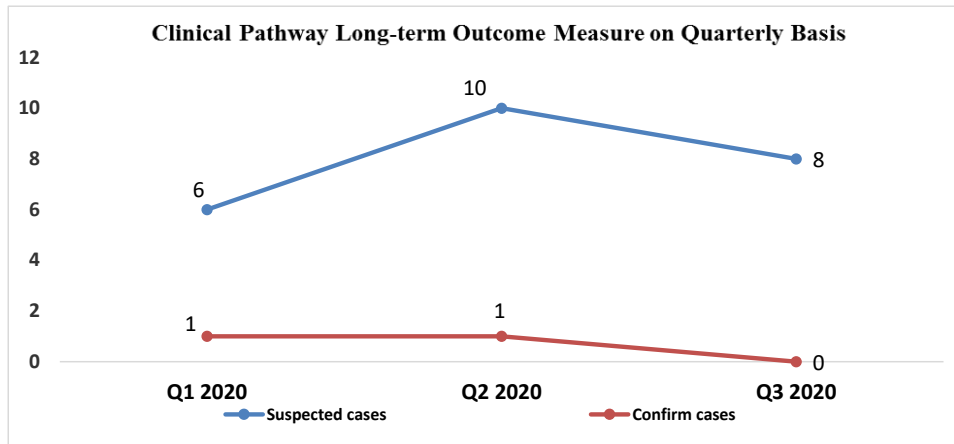
Data Sources: Retrospective review of Clinical Pathways

Number of patients managed on the Clinical Pathway: 8 .

Number of confirmed patients managed on the Clinical Pathway: 0 .

(Patient Disterbution)		
Decision Outcomes	Number of Patients	Percentage
Patient referred for Palliative	5 out of 8	62%
Patient cleared for surgery	0 out of 8	0%
Patient transferred back to primary tem / discharged	3 out of 8	38%





Findings:

1. The ultimate outcome measure for the SSCC clinical pathway is having the decision outcomes made within 24 hours from the activation Time, the result of this quarter is:

- a) They is no confirm cases with compression needed intervention.
2. The clinical pathway utilization for this quarter is **excellent 100%**.
 3. Based in One case incident whice delay patient care more than 24 hours
 - 4. The new changes are submitted for multideciplinaery meeting ,owner department revising the workflow to avoied such incident.

Action Plan:

1. The report is to be shared with the respective Healthcare Provider/ Medical Quality Director / Clinical Pathway Coordinator
3. Encourage the Healthcare Providers to utilize the clinical pathway's MD/nurse champion as a resource for any clarifications.
4. In-Services is continuously provided to the unit where the Clinical Pathway is implemented to sustain positive outcomes.