

Suspected Spinal Cord Compression Clinical Pathway Report

Clinical Pathway 2nd Quarter Report 2021

Data Collection Period: Data Collection Period: 01 April 2021- 30 June 2021.

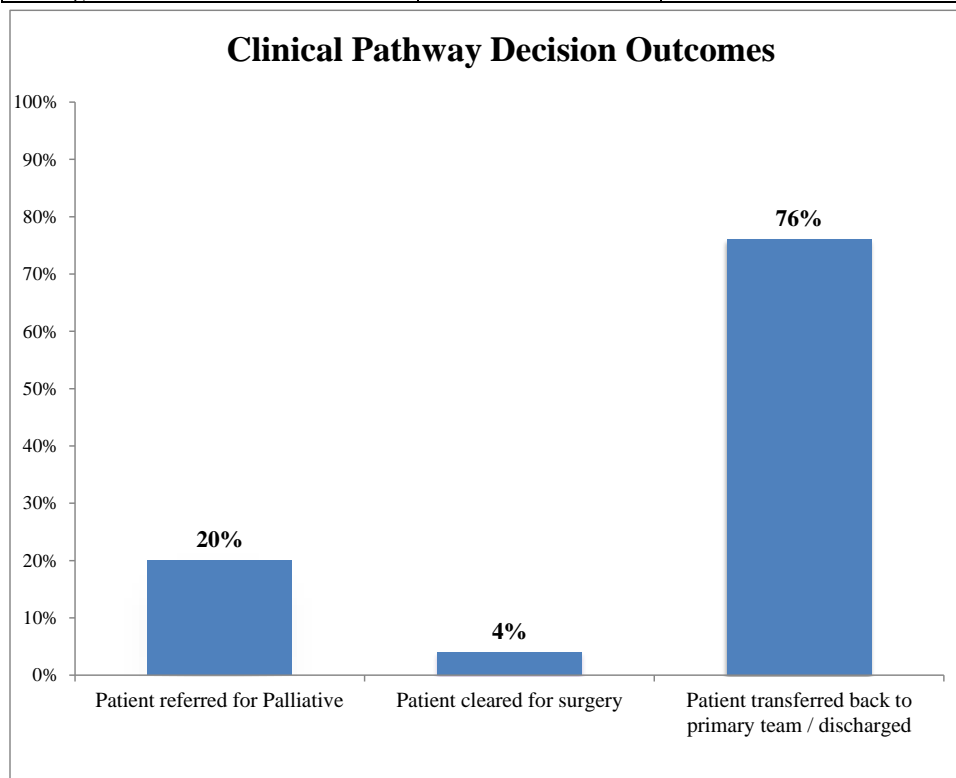
Units using the clinical pathway: Hospital Wide

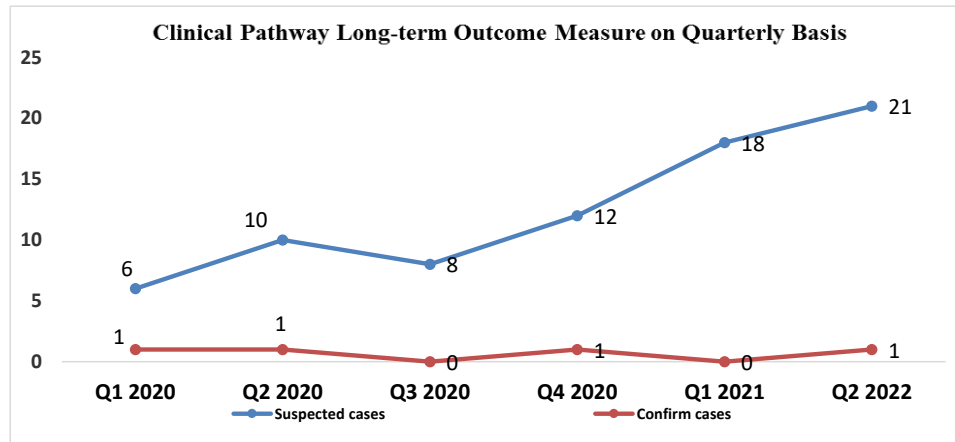
Data Sources: Retrospective review of Clinical Pathways

Number of potential patients to be managed on the Clinical Pathway: 21 .

Number of confirmed patients managed on the Clinical Pathway: 1.

(Patient Distribution)		
Decision Outcomes	Number of Patients	Percentage
Patient referred for Palliative	4 out of 21	20%
Patient cleared for surgery	1 out of 21	4%
Patient transferred back to primary team / discharged	16 out of 21	76%





Findings:

1. The ultimate outcome measure for the SSCC clinical pathway is having the decision outcomes made within 24 hours from the activation Time, the result of this quarter is:

a) There was a missed confirmed cases with compression that needed intervention.

- 2. The clinical pathway utilization for this quarter is **excellent 100%**.
- 3. The new changes regarding MRI arrangement and reporting time were submitted for discussion within a multidisciplinary meeting and the owner department (oncology) will reflect those changes on the agreed upon workflow

Action Plan:

- 1. The report is to be shared with the respective Healthcare Provider/ Medical Quality Director / Clinical Pathway Coordinator
- 3. Encourage the Healthcare Providers to utilize the clinical pathway's MD/nurse champion as a resource for any clarifications.
- 4. In-Services is continuously provided to the unit where the Clinical Pathway is implemented to sustain positive outcomes.